

January 2003  
*Zounds!*<sup>®</sup>  
MONTHLY PROGRAM GUIDE  
KUNM 89.9 FM

89.9 ALBUQUERQUE ♦ 89.9 SANTA FE ♦ 91.9 TAOS ♦ 91.1 CIMARRON/EAGLE NEST  
91.1 ARROYO SECO ♦ 91.9 LAS VEGAS ♦ 91.9 NAGEEZI ♦ 91.9 SOCORRO ♦ 91.1 CUBA

<http://kunm.org>

*Zounds!* is available online at [kunm.org](http://kunm.org).



**Amy Goodman**

**"Democracy Now:**

**Independent Media in Times of War."**

Saturday, January 18, 8 p.m. Popejoy Hall. See p. 4



The University of New Mexico  
Albuquerque, NM 87131-1011

Address Service Requested

Are you receiving  
duplicate copies of  
**Zounds?** While we  
try to avoid duplication,  
errors do occur. If you  
are receiving two  
copies, please send  
us the mailing labels  
from both copies so  
that we can correct our  
mailing list. Thanks!

Non-profit organization  
U.S. POSTAGE  
PAID  
Albuquerque, NM  
Permit No. 39

TIME VALUE MATERIAL  
DO NOT DELAY



# KUNM 89.9 FM

## Monthly Program Guide

### January 2003

## KUNM Transmitter Fund

As reported in the December issue of Zounds, KUNM desperately needs a new transmitter. Our 16-year-old transmitter has already exceeded the industry standard for useful life (12-15 years), so we're transmitting on borrowed time until we can purchase and install a new one.

We're in the final phase of the Capital Campaign that will pay for this and other major projects, and we still need your support to reach our final goal of \$250,000.

If you haven't yet contributed to this fund, please do it today. We're so close to our goal, and your gift will surely help to put us over the top.

If you don't have our December transmitter fund mailing, you can send your gift to: KUNM Transmitter Fund, Oñate Hall, UNM, Albuquerque, NM 87131-1011. Feel free to call us if you'd like more information (Richard Towne, 277-8009; Mary Bokuniewicz, 277-8006). Thank you! ■

## Invitation to Southwest Coffeehouse

KUNM's award-winning independent production, *Southwest Coffeehouse*, is launching Community Conversations, and you're invited! Join host Ron Chapman for a discussion with Robert Baldwin, author of "The Water Thief," at Albuquerque's Westside Barnes and Noble on Saturday, January 18 at 1 p.m.

Community Conversations is designed to extend discussion to the audience to provide a robust dialogue about significant social issues. The theme of Baldwin's novel is one of forgiveness and redemption, subjects of profound relevance in our increasingly complex world. The resulting discussion will be edited for broadcast on *Southwest Coffeehouse* on KUNM later in the spring. ■

## New Mexico Roasts the War of the Worlds January 7th!

Live Radio Theater at the Outpost  
Performance Space, with more on the way!



Join KUNM for a live performance and recording of "Mars vs. New Mexico," by David Landry, a satire inspired by Orson Welles' 1938 production of "The War of the Worlds." Mr. Landry is one of the winners of KUNM's Radio Play Script Contest, which concluded in September. Marya Errin Jones directs.

The performance and recording will take place at 8 p.m. on Tuesday, January 7, at the Outpost Performance Space, 210 Yale SE, two blocks south of Central. Admission is free, but please arrive early, since seating will be limited. Please call 277-4516 for more information.

Seating for performances of the other contest winners will be free as well, but again, please arrive early.

At 8 p.m. on Tuesday, February 4, in the South Broadway Cultural Center, 1025 Broadway SE, see a live recording of "The Fourth Psalm," by John L. Martins, III, addressing a priest's aid to Latin refugees during the Sanctuary Movement of the Reagan years, and the crisis of conscience which eventually consumes his mentor.

Also at the South Broadway Cultural Center, on Wednesday, March 19 at 8 p.m., "Rolling On," by Richard Bodner, the story of the Santa Fe Trail across the years, as told through the journals and songs of actual travelers. (The bull whips will be cracking!)

These events are sponsored by the Urban Enhancement Trust Fund of the City of Albuquerque, and KUNM. ■

### IN THIS ISSUE:

Report to the KUNM Community .....	3
Our New Dish .....	6
Program Grid .....	8

Program Listings .....	9
Radio Highlights .....	10
Program Underwriters .....	14

# KUNM Operations Staff

Mary Bokuniewicz ..... Development Director  
 Tristan Clum ..... Production Director  
 Leslie Fishburn-Clark ..... Reporter  
 David House ..... Music Co-Director  
 Rachel Kaub ..... Operations Manager  
 Marcos Martinez ..... News Director  
 Linda Morris ..... Accounting Technician  
 Mary Oishi ..... Underwriting Marketing Specialist  
 Kevin Rogers ..... Chief Engineer  
 Dean Shelton ..... Coordinator, Development & Relations  
 Richard S. Towne ..... General Manager  
 Tom Trowbridge ..... Morning Edition Host/Reporter



**Business line: 277-4806 Request line: 277-5615**

## KUNM Radio Board

<b>UNM Faculty Representatives:</b>	Andrew Stone
Margo Milleret	<b>ASUNM Representatives:</b>
Vacant	Rafael Gallegos
<b>Elected Community Reps:</b>	<b>GPSA Representative:</b>
Julian Spalding	Bruce Thompson
Coleman Travelstead	<b>University Staff Rep:</b>
Vacant	Mike Swick
<b>Appointed At-Large Reps:</b>	<b>Ex-Officio Members:</b>
Will Chavez	Richard S. Towne, General Mgr.
Susan McKinsey	Roy Durfee, Volunteer Rep.

## KUNM Student Staff

Leo Dexter ..... Production Assistant  
 Andrew Frankl ..... Engineer  
 Kim Gleason ..... Music Assistant  
 Nick Layman ..... Reporter  
 Todd Lovato ..... Production Assistant  
 Sarah Marinelli ..... Music Assistant  
 Daniel Monroe ..... Admin. Assistant/PSA Coordinator  
 Joel Newey ..... Reporter  
 Carilyn Rome ..... Production Assistant  
 Lena Stavely ..... Music Assistant  
 Tracy Tsosie ..... Reporter  
 Othiamba Umi ..... Production Assistant

## KUNM Programming and Support Staff

Call 277-4516 for information on volunteer opportunities at KUNM.

Jan Abugharbieh	Rosemarie DeLeo	Cindy Hong	Scott MacNicholl	Evelyn Schlatter
Mimi Adams	David Denny	Cheryl Hooks	Ricardo Magallanes	Ryan Schlee
Marilyn Altenbach	Don (Donaldson) DeNoon	Geneva Horse Chief	Jason Marchiondo	Stephen Schmidt
Dennis Andrus	M. Charlotte Domandi	David Hughes	Chris Martín	Andrew Schmookler
Inez Arroyo	Lori Doron	Gulliver Hughes	Sofía Martínez	Jude Segall
Jim Bailey	John Doyle	Paul Ingles	Rachel Maurer	Martin Sena
Jonathan Baldwin	David Dunaway	Mary Ellen Ipiotis	Carrie McGill	Harish Sharma
Eulynda Benalli	Roy Durfee	Jim Jaffe	Don McIver	Fern Shegonee
Claire Bennett	Rose Ebaugh	Pat Johnson	Frank Melcori	Josh Shepherd
Dorothy Best	Dan Estes	Brandon Kennedy	Nancy Meza	Carolina Soares
Larain Bigcrane	Kelley Evans	Mary Kennedy	Steven M. Miller	Christopher Sovereign
Jane Blume	John Fonte	Thane Kenny	Christian Montaña	Stephen Spitz
Chip Borton	Velislava Franta	Padraic Keohane	Francis Montoya	Karl Stalnaker
Carol Boss	Adriana Gallegos	Scott Key	Gustavo Montoya	John Steiner
Shelby Bradley	Ignacio Gallegos	Sheila Key	Josh Narcisso	Claude Stephenson
Jeff Bray	Carlotta Garcia	Pat Kiska	Carol Nez	John Strader
Pat Brennan	Tomás Garcia	Randy Kolesky	David Nicasio	Kee Straits
Ron Bryan	Jon Ghahate	Allison Marie Kulp	Zimbabwe Nkenya	Kevin Street
Derek Cadwell	Renzo Giromini	Scott Larrichio	Harry Norton	Joe Sullivan
Arturo Cardona	Craig Goldsmith	Barry Lauesen	Pam Owens	Joe Tapia
Gloria Carol	Cynthia Gomez	Darrell Felipe Lawrence	Rick Ortiz	Jerome "Putnay" Thomas
Ron Chapman	Henry Gonzales	Mark LeClaire	Daniel Pallares	Jerry "Eeyo" Thompson
Sheryl Clapton	Jason Gonzales	Elma Leigh	Kent Paterson	Ken Tohee
Darryl Clark	Russell Goodman	David Lescht	Arturo Perez	Jaime Trevizo
Rufus Cohen	Katie Graunke	Andrew Lewis	Steve Peters	Mano Trujillo
Tanya Cole	Caroline Griffin	Glenda Lewis	Cecilia Portal	Stacy Tyler
Vivian Connolly	Peter Grotte-Higley	Tim Lewis	Antoinette Previtti	Anthony "Ijah" Umi
Allen Cooper	Wellington Guzmán	Alan Liddel	Chris Purcell	Bill Umstead
Neal Copperman	Ron Hale	Patti Littlefield	Guillermina Quiroz	Al Urbano
Accel Corral	Louis Head	Jonathan Longcore	Roberta Rael	Lucio Urbano
Dan Cron	Ben Heath	Richard Lopez	Cole Raison	Valerie Valdez
Gail Cunningham	Michael Henningsen	Susan Loubet	Tom Rapisardi	Raymond Vargas
Kabir Daitz	Cynthia Hernandez	Katrina Lucas	Bonnie Renfro	Brooke VonBlumberg
Wadell Dawson	Joseph Herrera	Brigitte Lueck	David Reynolds	Anthony Wayne
Mary Pat Day	Peggy Hessing	Maureen MacDonald	Linda Rodeck	Cecilia Webb
Ed DeBuvitz	Bonny Holder		Kelvin Rodríguez	Mark Weber
			Marty Ronish	Joe Gardner Wessely
			Jamie Rustemeyer	Molly White
			Kathy Sabo	Catherine Wier
			Riti Sachdeva	Enid Williams
			Scott Salyers	Whitney Woodward
			Melanie Sanchez	Karen Yager
			Travis Sandoval	Charlie Zdravesky
			Mike Santullo	Laura Zimmerman

# REPORT TO THE KUNM COMMUNITY

by Richard S. Towne, KUNM General Manager



In February and March of the new year, KUNM will hold an election for four seats and one alternate seat on the KUNM Radio Board. I am giving you a “heads-up” on the election in the hopes that you will consider nominating yourself to stand for election to the Board. As you might recall, we only had four nominations two years ago. While all four are great folks, we need at least five candidates to have an election. Two years ago we did not have a chance to distribute a ballot – all four nominees were seated as members.

I don’t raise the issue of our last election as a way of complaining or criticizing anyone. Although one of the four Board members resigned early in her term, the other three Listener Representatives have provided excellent service on the Radio Board. I raise the issue because we need lots of candidates to have a ballot so that you as a listener can participate in this important decision-making process.

I’ll fill this page with my own thoughts and observations about the Radio Board in the hopes of convincing you to help us serve our community. Full and official details of the election process will be published in February’s issue of *Zounds!*, and should be available at KUNM.ORG by the end of January. You will also hear announcements about “Calls for Nominations” and “Deadline for Voting” during our broadcasts. For now, let me engage in some unofficial “thinking-out-loud” about the Radio Board. If you have questions about the Board or serving on the Board, you can send them to [kunm@kunm.org](mailto:kunm@kunm.org) or in the mail to KUNM, UNM, Albuquerque, 87131-1011. I’ll be happy to respond or forward your questions to members of the Radio Board for their response.

You don’t necessarily need radio experience or a background in non-profit management to run for a seat on the Radio Board. Four of thirteen Board seats are set aside for election by our contributing listeners in order to give contributors direct access to the Board. KUNM benefits when listeners work on the Board. Terms are for two years with a two term limit. The Board meets once a month on the first Tuesday of the month from 6 – 8 pm. The meeting times can be changed to suit the needs of the Board. The meetings take place at UNM. They are open to

the public and are wheelchair accessible. If you are at all curious about serving on the Radio Board, please feel free to attend the January 7 and February 4 meeting to see for yourself.

Typically, the Radio Board will establish working committees directed at specific tasks. As an elected representative you will be expected to serve on one or more committees – usually entailing one additional meeting per month per committee. Committee meeting times and places are established at the discretion of committee members. The KUNM Radio Board is chartered by our licensee, The Regents of the University of New Mexico and operates under Regents’ Policy and Bylaws.

The Bylaws give the Radio Board an advisory role in station affairs with a core purpose of advising on major policy and programming decisions. If the Board and station management are unable to find agreement on major policy or programming issues both sides can present information to UNM’s Provost (as designated by the Regents) for a final decision. In the past eight years, Board and management have been able to reach consensus or compromise on all but one issue. We truly do everything possible to work together for the best interest of our communities.

The good folks on our current Radio Board are passionate about KUNM programming and have been highly effective in helping us strengthen our service. The Board has been instrumental in helping create a consensus-based vision statement for KUNM and a strategic planning process to guide and shape our work to meet that vision. The Board has helped to raise money for our new transmitter and remodeling of our facilities.

Recently, the Board reviewed and approved our new “Live Announcement Language Policy” and revisions to our internal “Policies and Procedures” governance documents. While we have not had any major disputes in front of the Radio Board for a number of years, the Board plays a formal role in resolving conflicts if need be. This is significant, substantial and important work that the Radio Board provides to the KUNM community. The current Radio Board has been very active in supporting the work of KUNM volunteers, to the benefit of all of us. As you can see, there will be plenty of work to do if you decide to run for a seat on the Radio Board.

Continued on p. 5



I do want to lay out a caution for you. The Radio Board does not initiate or mandate program changes. The Regents have provided KUNM with a formal process for major changes to programming. The process insures that listeners will have an opportunity to participate in the discussions leading up to a decision. Volunteers have a seat at the decision making table and the Radio Board is required to consider any proposed changes and advise management on the desirability of the changes. The Board has a crucial stake in evaluating proposed changes but the Board is not the body that originates formal program changes. That role is given to station management in the Regents Bylaws for the KUNM Radio Board.

This is not to say that station staff and management won't listen to suggestions and advice from the Radio Board regarding possible changes. Programming is evolutionary at KUNM and staff and management are considering advice on programming every day. As a KUNM listener, you have a direct and specific relationship with our programming. There are programs that you value greatly and programs that you may not value at all. I bring this up to make sure that you're not thinking that by winning an elected seat on the Radio Board, you will suddenly be

wielding power to change KUNM programming into "All Polka" or "All Chat" or "Only the Stuff I Like and Nothing Else."

KUNM is a shared community resource and we honor the communities we serve by having an open process for changing programs. I want to personally invite you to bring your passion for community radio and community service to help us improve the work that we do. Come February, I hope you will nominate yourself to serve as an elected representative to the KUNM Radio Board. ■

**KUNM Radio Board Meeting**  
**Tuesday, Jan. 7, 6-8 p.m.**  
**Room 100, Scholes Hall,**  
**UNM Campus**

The regular monthly meeting of the KUNM Radio Board is held the first Tuesday of each month; the public is invited to attend. "Open Mic" time is provided to take your comments and questions.

# Our New Dish!

A familiar UNM landmark will be disappearing without a trace in late December. Since the late 1970s, a huge satellite dish has made its home at the corner of KUNM headquarters in Oñate Hall on campus. The dish was used to receive imported radio programs from NPR, PRI and independent producers from across the public radio spectrum.

The 4.5 meter dish was made obsolete last summer when the Public Radio Satellite System (PRSS) replaced it with a smaller and more agile dish. Photos here show the installation of the new dish installed on the roof of Oñate Hall. Costs for the dish and installation were paid for by PRSS. KUNM pays an annual fee to PRSS for satellite services. Some of the funds used to pay PRSS come from contributing listeners so we thank you for helping us get the job done.



The new dish is agile in the sense that it is “aimable” to receive radio signals from various satellites if our current satellite goes out of orbit or is abducted from earth orbit by alien life forms. You might remember a couple of years ago when the satellite Galaxy 4 went out of orbit – causing loss of NPR programming and most cellular telephone service across the country.

The old dish required a huge crane, and a team of five working all day, to re-aim. The new dish can be re-aimed with a couple of wrenches and two people working for half an hour. KUNM and UNM are paying for the removal and recycling of the old dish. We are also removing the cyclone fence and razor wire used to secure the dish. Goodbye neighborhood eye sore.

The lawn outside of Oñate Hall will be restored to its early state of natural splendor (actually, UNM needs to park a double-wide mobile office on the lawn for the next year or so, but soon the aesthetics of our facilities will be



greatly improved). We thought you might enjoy this “behind the scenes” peek at one portion of the work we do to continually improve our service to you.

Big thanks to everyone at UNM and In-Touch Communications from Las Cruces for their cooperation and expertise in this upgrade. ■



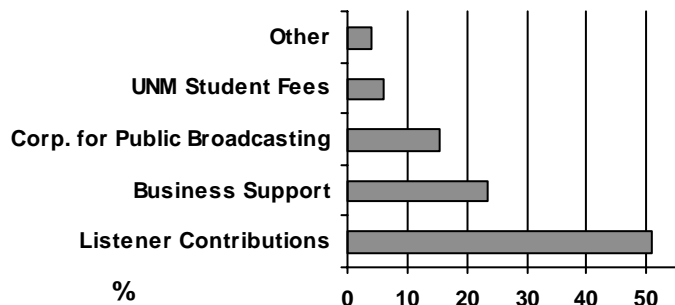
Photos courtesy of In-Touch Communications.

*Zounds!* is published monthly by KUNM as a service to its members. Offices are located in Oñate Hall, UNM, Albuquerque, NM 87131-1011. For display advertising, call Mary Bokuniewicz at 277-8006.

KUNM 89.9 FM is licensed to the Regents of the University of New Mexico as a non-commercial, educational broadcast facility. Studios are located on the UNM campus in Oñate Hall. Our transmitter is located on Sandia Crest and broadcasts with an effective radiated power of 13,500 watts.

KUNM operates FM translator stations in Arroyo Seco, K216AL 91.1; Las Vegas, K220AW 91.9; Taos, K220AV 91.9; Cimarron/Eagle Nest, K216CT 91.1; Socorro, K220EL 91.9; Cuba K216CU 91.1; and Nageezi K220EM 91.9.

### KUNM Funding Sources



This graph represents inputs to KUNM's annual operating budget. The University of New Mexico makes an annual indirect (non-cash) contribution to KUNM of facilities, staff support and administrative services. In FY '00, UNM's contribution to KUNM was valued at \$125,000.

KUNM programming is made possible in part by a grant from the Corporation for Public Broadcasting.

Most of KUNM's local programming is produced and hosted by volunteers, including students and community members. Their contributions provide an invaluable service to KUNM and its listeners.

Funding for KUNM training programs is provided in part by students at the University of New Mexico. These funds are allocated to KUNM by the Student Fee Review Board in consultation with the Associated Students of the University of New Mexico and UNM's Graduate and Professional Student Association.

To protect the privacy of our contributors, it is the policy of KUNM to refrain from any form of mailing list exchange with any for-profit, non-profit or political organization. KUNM does not trade or sell its membership lists to any such concern.

The University of New Mexico is an Affirmative Action/Equal Opportunity institution. In accordance with the Americans with Disabilities Act, this material is available in alternate formats upon request. For information, call 277-3968. KUNM is a member of the Albuquerque/Santa Fe/Los Alamos Equal Employment Opportunity Council.

## YOU MAKE PUBLIC RADIO POSSIBLE!

KUNM is funded in part by financial contributions from listeners like you. More than 50 percent of our annual operating budget comes from listener support. If you're listening to KUNM, please help pay for it! Complete this form and mail it with your tax-deductible gift to:

**KUNM-FM Development Department  
Oñate Hall, University of New Mexico  
Albuquerque, NM 87131-1011**

Name \_\_\_\_\_

Address \_\_\_\_\_

City \_\_\_\_\_

State \_\_\_\_\_ Zip \_\_\_\_\_

Phone \_\_\_\_\_

### Amount:

- |                                  |  |
|----------------------------------|--|
| <input type="checkbox"/> \$1,000 | <input type="checkbox"/> \$75                    |
| <input type="checkbox"/> \$ 500  | <input type="checkbox"/> \$60                    |
| <input type="checkbox"/> \$ 240  | <input type="checkbox"/> \$40 (basic membership) |
| <input type="checkbox"/> \$ 120  | <input type="checkbox"/> \$20 (students/seniors) |

### Please check one:

- Payment enclosed  
 Charge to VISA/Mastercard

Card Number \_\_\_\_\_

Exp. Date \_\_\_\_\_

*Automatic bank transfers make it easier than ever to support KUNM! Join the KUNM CARETAKER CLUB and you can automatically transfer \$5 or more each month from your bank account to ours. For details, call 277-3968.*

**A gift of \$75 or more entitles you to the KUNM MemberCard, with two-for-one offers at nearly 200 restaurants and attractions throughout New Mexico.**

Please send me a KUNM MemberCard.

**Pledge of \$20 or more includes a one-year subscription to *Zounds!*, KUNM's monthly program guide. Check here if you DO NOT wish to receive *Zounds!***

**Questions? Call 277-8006 or 277-3968.**

## SUPPORT PUBLIC RADIO!





	monday	tuesday	wednesday	thursday	friday	saturday	sunday	
5:00	<b>morning edition</b> 5-8:30am MTWF 5-8am TH					<b>overnight freeform</b>		5:00
6:00						<b>new dimensions</b> 6-7am	<b>train to glory</b> 6-9am	6:00
7:00						<b>weekend edition</b> 7-9am		7:00
8:00				<b>call-in program</b> 8-9am	<b>public affairs</b> 8:30-9am			8:00
9:00	<b>latino USA</b> 8:30-9am	<b>counterspin</b> 8:30-9am	<b>living on earth</b> 8:30-9am					9:00
10:00	<b>performance today</b> 9-11am					<b>children's radio hour</b> 9-10am	<b>weekend edition sunday</b> 9-11am	9:00
11:00	<b>performance new mexico</b> a 5-minute feature on local events, airs at 9:01am and 10:01am					<b>folk routes</b> 10-Noon		<b>kunm specials</b> 11-Noon
11:00	<b>native america calling</b> 11-Noon							11:00
Noon	<b>kunm news at noon</b> Noon-12:05pm					<b>women's focus / voces feministas</b> Noon-2pm	<b>singing wire</b> Noon-4pm	Noon
1:00	<b>all that jazz</b> Noon-1:30pm							1:00
2:00	<b>freeform</b> 1:30-4pm					<b>raices</b> 2-5pm		2:00
3:00								3:00
4:00	<b>democracy now</b> 4-5pm						<b>this american life</b> 4-5pm	4:00
5:00	<b>kunm evening report</b> 5-5:25pm					<b>all things considered</b> 5-6pm		5:00
6:00	<b>all things considered</b> 5:30-7pm					<b>alternative radio</b> 6-7pm	<b>this way out</b> 6-6:30pm	6:00
7:00	<b>raices</b> 7-10pm	<b>home of happy feet</b> 7-10pm	<b>the blues show</b> 7-10pm	<b>iyah music</b> 7-10pm	<b>salsa sabrosa</b> 7-10pm	<b>ear to the ground</b> 7-8pm	<b>the house that jazz built</b> 6:30-8:30pm	7:00
8:00	<b>espejos de aztlan</b> 8:00pm					<b>hot lix</b> 8-10:30pm		<b>other voices other sounds</b> 8:30-10:30pm
9:00								9:00
10:00	<b>global music</b> 10pm-1am	<b>music to soothe the savage beast</b> 10pm-1am	<b>tombstone rock</b> 10pm-1am	<b>fresh</b> 10pm-1am	<b>afropop worldwide</b> 10-11pm	<b>dog city rock</b> 10:30pm-1am	<b>radio theatre</b> 10:30-11:30pm	10:00
11:00					<b>street beat</b> 11pm-2am		<b>spoken word</b> 11:30pm-12:30am	11:00
Midnite							<b>bookworm</b> 12:30-1am	Midnite
1:00	<b>freeform</b> 7 days a week					<b>coffee express</b> 1-3am	<b>cyberage</b> 1-3am	1:00
2:00								2:00
3:00								3:00
4:00								4:00

**stardate** your two-minute guide to the galaxy runs M-F at 7pm; weekends at 6pm  
**national native news** can be heard M-F from 11:01-11:06am  
**independent native news** can be heard M-F from 5:24-5:29pm



# PROGRAM LISTINGS

**Afropop Worldwide** Fri. 10 p.m. Music with an African influence from around the world.

**All That Jazz** M-F noon. Jazz, straight ahead to fusion.

**All Things Considered** M-F 5:30 p.m., Sat. & Sun. 5 p.m. Award-winning news magazine from NPR.

**Alternative Radio** Sat. 6 p.m. The view from the other side, featuring some of the most progressive writers, thinkers and activists of our time.

**The Blues Show** Wed. 7 p.m. The spectrum of blues music, plus interviews, live performances, and blues news.

**Bookworm** Mon. 12:30 a.m. (Sun. night) Michael Silverblatt interviews writers of fiction and poetry, established, new, or emerging.

**Call-In Show** Thur. 8 a.m. Live interviews with community leaders; call in your comments and questions at 277-KUNM.

**Children's Radio Hour** Sat. 9 a.m. Stories and music for children of all ages.

**Coffee Express** Fri. 1-3 a.m. Live, improvised music, voice, effects and sound collages, combined with on-air phone callers, CDs and records, tape loops, internet audio, etc. It's not jazz, but it is caffeinated.

**Counterspin** Tues. 8:30 a.m. A critique of the week's news coverage by other media, from FAIR.

**Cyberage** Sun. 1-3 a.m. Innovative electronic music of all sub-genres, specifically elektro, industrial, ebm, ambient, power noise, synthpop, techno and drum 'n' bass.

**Democracy Now** M-F 4 p.m. From Pacifica, diverse commentators focus on the issues affecting individuals and society.

**Dog City Rock** Sat. 10:30 p.m. Classic rock & roll; electric music for the mind and body from the '60s and '70s.

**Ear to the Ground** Sat. 7 p.m. A local music showcase, featuring live performances by local talent.

**Espejos de Aztlan** Mon. 8 p.m. Bilingual arts and public affairs program with interviews.

**Folk Routes** Sat. 10 a.m. A weekly sampling of the best in folk, blues to bluegrass and beyond.

**Freeform Music** M-F 1:30-4 p.m.; overnights. A diverse showcase of KUNM's music library, uncovering common roots in music from different places and times.

**Fresh** Thur. 10 p.m. New Mexico's international electronic and "new" music program featuring guest composers, artists and interviews.

**Global Music** Mon. 10 p.m. Exploration of music from around the world.

**Home of Happy Feet** Tues. 7 p.m. Folk music in the broadest sense of the term. Bluegrass, blues, cajun, zydeco, western swing, rockabilly, Tex-Mex, and more!

**Hot Lix** Sat. 8 p.m. Charlie Z. hosts a program of "oldies," commentary, dedications & requests, and special guests.

**House that Jazz Built** Sun. 6:30 p.m. Uncompromising creative music from the past 30 years.

**The Human Experience** Sun. 10:38 a.m. A two-minute anthropological slice of life.

**Independent Native News** 5:25 p.m. 5-minute program presenting current news about Native Americans.

**Iyah Music** Thur. 7 p.m. Reggae and roots; a spectrum of African-influenced music.

**KUNM Evening Report** M-F 5 p.m. Locally-produced news magazine with emphasis on events in New Mexico.

**KUNM Specials** Sun. 11 a.m. From public affairs to holiday specials, the latest and best in local and national production.

**Latino USA** Mon. 8:30 a.m. English-language radio journal of Latino news and culture.

**Living on Earth** Wed. 8:30 a.m. Weekly environmental news and information program, from NPR.

**Morning Edition** M-F 5-8:30 a.m. Award-winning morning news magazine from NPR.

**Music to Soothe the Savage Beast** Tues. 10 p.m. Progressive and indie rock culled from new releases you're not likely to hear anywhere else. Plus live and recorded local music.

**Native America Calling** M-F 11a.m. The nation's first live daily call-in program by, for, and about native people. 1-800-99NATIVE to take part.

**National Native News** M-F 11:01 a.m. 5-min. newscast focusing on Native American issues.

**New Dimensions** Sat 6 a.m. Dialogues presenting a diversity of views from many traditions and cultures, with practical knowledge and perennial wisdom for a more healthy life of mind, body and spirit.

**News at Noon** M-F noon. World, national and local news, from NPR and KUNM.

**Other Voices, Other Sounds** Sun. 8:30 p.m. "New Music" with a classical orientation; hosts Joan LaBarbara, Jim Bailey, Steven Miller.

**Performance New Mexico** M-F 9:01-9:06, local arts calendar; 10:01-10:06 feature on upcoming local event; calendar listings on the web at [kunm.org/perfnm](http://kunm.org/perfnm).

**Performance Today** M-F 9 a.m. A two-hour program of classical music performances, recorded live; from NPR.

**Radio Theater** Sun. 10:30 p.m. From traditional to experimental, set in the theater of the mind.

**Raíces** Mon. 7 p.m. & Sat. 2 p.m. Latin American *Freeform* music, all genres of Hispanic music.

**Salsa Sabrosa** Fri. 7 p.m. Afro-Caribbean-influenced music. Hot!

**Singing Wire** Sun. noon. Native American music, traditional to today's sounds of folk, C&W, rock.

**Spoken Word** Sun. 11:30 p.m. Spoken word, with a focus on stories, from both local and national sources.

**StarDate** M-F 7 p.m., Sat. & Sun. 6 p.m. Two-minute travelguide to the universe. What to look for in the night sky, tales of ancient skylore.

**Street Beat** Fri. 11 p.m. House, Hip-Hop, Hip-House, Dancehall.

**This American Life** Sun. 4 p.m. A quirky look at modern life through fact, fiction and found tape.

**This Way Out** Sun. 6 p.m. International lesbian and gay news magazine.

**Tombstone Rock** Wed. 10 p.m. Ear-shredding metal music other stations are afraid to play.

**Train to Glory** Sun. 6 a.m. Sunday morning Black gospel music featuring traditional, contemporary, and local church choirs.

**Voces Feministas** First Sat. every month, noon. Features the voices of third world women, and women of color.

**Weekend Edition** Sat. 7 a.m., Sun. 9 a.m. Weekend news magazine from NPR.

**Women's Focus** Sat. noon. Women's magazine on politics, art, culture, news, and information.

# RADIO HIGHLIGHTS

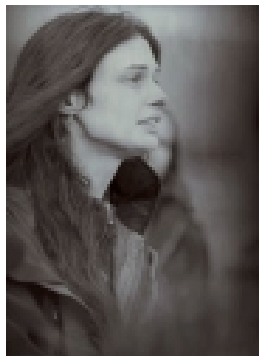
## Friday, January 3

**8:30 a.m. University Showcase,** “Write at 7000 Feet: The Taos Summer Writers’ Conference.” This conference is designed for working writers and for people who’d like to be working more on their writing. Our guests will be Associate Professor of English and Director of Creative Writing, Department of English, Dr. Sharon Oard Warner, the organizer and Director of the Taos Summer Writers’ Conference; Dr. Gregory Martin, Assistant Professor of English, and Creative Writing Instructor at the Taos Summer Conference; and Ms. Monica Garcia, a graduate student in English who has studied at the Taos Summer Conference. Learn of the magic that is Taos and “feed the artist within.” Hosted by Jane Blume and produced by Dick Frederiksen.

**10 p.m. Afropop Worldwide,** “What A Voice!” Some singers have such spine-tingling, gut-wrenching, ethereal voices they make you exclaim, What A Voice! That’s what’s on the docket today — some of the world’s most stunning singers. Featured are artists who happen to have flown under the radar screen of the world music star pantheon. We’ll hear Kasse Mady from Mali, Bana from Cape Verde, Busi Mhlongo from South Africa, and Emil Zrihan from Israel via Morocco. Not much talking this program. You’re invited to sit back and be swept away by the voices.

## Saturday, January 4

**6 a.m. New Dimensions,** “The Power Of One: Making Choices For A Better World,” with Julia Butterfly Hill. Sitting in a redwood tree for more than two years, enduring the worst winter recorded in California history, having her life threatened, being ridiculed, misunderstood, and broken on every level, all for the love of a forest, speaks volumes about the courage of Julia Butterfly Hill. In this moving dialogue, Julia speaks about her



heart wrenching experiences in the redwood tree she named Luna, and the work she has been doing since she ended her tree sit. Julia continues to speak out for the Earth, and acknowledges how easily we can become overwhelmed by the problems of the world. She shares the story of how she overcame her own feelings of powerlessness by choosing to do something that she knew she could

do – climb trees, a simple choice followed by an action, which continues to have a rippling effect throughout the world. “When we look at the bigger picture it is easy to get overwhelmed, but when we look at how many simple things can have such a profound impact, we realize our power as individuals.” Julia Butterfly Hill is a writer, poet and activist. She is the founder of the Circle of Life Foundation, and the author of the best selling “A Legacy of Luna” (Harper San Francisco 2000) and “One Makes the Difference: Inspiring Actions That Change Our World” (Harper San Francisco 2002). Topics explored in this dialogue: How you can find the power to make a difference in the world, what simple choices you can make each day to help the Earth, why our in-actions and non-choices are part of the injustice in the world, how the U.S. government is using the events of 9/11 to quiet the voices of dissent, how Julia learned the ancient Buddhist practice of Tonglen from Luna. Tape # 2942

**7 p.m. Ear to the Ground,** 2002 Best of Spring. This show features bands recorded in KUNM’s Studio A in the spring of 2002. You’ll hear music by Felonious Groove Foundation, The Blunt Society, Panjea, The B-Side Players, The Tony Brazis Group, Ritmo Caliente and Alien Lovestock.

## Sunday, January 5

**11 a.m. Feminisms,** “The Price of Safety: Implications for Women, Families and Communities Today.” Radcliffe University presents a series of lectures that explore the way we live as individuals and as families. Do national security concerns require us to forfeit the privacy and safety of our homes? As larger and larger segments of the U.S. population are “criminalized” by ethnic and racial profiling, agencies such as Amnesty International are hearing about an increasing number of incidents of “enforcement violence.” Annanya Bhattacharjee draws on reports compiled by dozens of community watch and human rights organizations to demonstrate how a narrow, “hard sector” view of security issues actually puts many families at risk of forced separation, homelessness, physical assault, and impoverishment. Anannya Bhattacharjee is Program Officer at the Unitarian Universalist Veatch Program, a national funder of social justice work in the U.S., and is currently co-editing “Policing the National Body: Sex, Race and Criminalization in the United States” (South End Press, March 2002). Her most recent publication, “Who’s Safety?: Women of Color and Law Enforcement Violence,” was co-sponsored by the American Friends Service Committee and the committee on Women, Population and Environment.

**10:30 p.m. Radio Theater**, “Stone Soup,” “Sonic Force” and “The Dakota Reader.” We’ll begin with a tale carried over from December 8th’s “New Mexico Storytellers.” The rest of the hour will focus on segments from The Radio Works: Producers Dwight Frizzell and Michael Henry of Wabi Media present a short documentary on the production of a performance piece based on the sound of an A-10 Wart Hog, and then an excerpt from “Sonic Force,” the resulting production. Lastly, hear a series of readings made up of poetry, storytelling and music from producer Brian Price, in conjunction with South Dakota State University, the Dakota Art Museum and South Dakota Public Radio.

## Wednesday, January 8



**8:30 a.m. Bioneers.** Part 1: “The Duh Principal: Better Safe Than Sorry.” “Look before you leap.” “Better safe than sorry.” These simple mottos express the heart of the precautionary principle, which acts as a lens for scientific choices, “an insurance policy against our own ignorance.” Carolyn Raffensperger and Sharyle Patton share stories that put flesh and bone on this golden rule. Tape #2920

## Friday, January 10

**8:30 a.m. Friday Forum.** Host and producer Stephen Spitz speaks with attorney Morris Dees, who is the founder of the Southern Poverty Law Center, and is renowned for his legal victories over the Ku Klux Klan and related militia organizations. While the name Morris Dees may be familiar to listeners, his background is not as well known and, accordingly, the discussion starts with “Bubba” Dees’ formative years as the son of tenant farmers. Particular attention is paid to Dees’ relationship with Blacks in the then segregated South and why he formed a commitment to equality and justice while others did not. Two surprising aspects of Dees’ career are then raised: 1) Dees managed to become a millionaire in the direct mail business in the course of obtaining a law degree and 2), Dees law school friend, business associate and initial law partner is no other than the founder of Habitat for Humanity. After exploring these seemingly unlikely occurrences, the conversation then turns to why Dees gave up his business career to devote himself to civil rights cases and litigation against the Klan. The program concludes with a discussion of some of the most prominent cases brought by the Southern Poverty Law Center, including its recent win over the Aryan Nation. Produced with the assistance of Leo Dexter.

**10 p.m. Afropop Worldwide**, “Musical Tales From the Peace Corps.” Our musical tales from the Peace Corps evoke fond memories from former volunteers and inspire daydreams amongst the uninitiated. Can you imagine what musical experiences and cultural initiations might happen if you cross the oceans? We’ll find out as we talk with returned Peace Corps volunteers celebrating this grand American institution’s anniversary, and hear the music and stories they brought back.

## Saturday, January 11

**6 a.m. New Dimensions**, “The Path Of Vipassana: Inner Peace For Inner Wisdom,” with S. N. Goenka. There is a way out of suffering, according to the Buddha. World-renowned Vipassana meditation teacher S. N. Goenka tells us that the escape from suffering and the key to liberation is to understand our own reality. Through the simple technique of Vipassana meditation, one can attain true peace of mind and a contented life. Goenka, a retired industrialist, shares the story of how his severe migraine headaches led him on a search to find a cure 30 years ago. What he found was a discipline that went far beyond alleviation of physical pain. It transformed his life, and he has been teaching Vipassana ever since. Goenka explains how and why the 2500-year-old meditation technique is effective, and how it is achieving extraordinary results in prisons both in India and the U.S. “In a few courses time, we find a big change. Even in the first course, change starts. There is a result here and now, so the government of India has given instructions – Vipassana must be taught in prisons.” Goenka is a retired industrialist, and a former leader of the Indian community in Burma. He has been a world-renowned teacher of Vipassana meditation since 1969. Topics explored in this dialogue: How you can free yourself from the habit patterns that destroy peace and harmony; why Buddha was a “super scientist”; how to work at the root of the mind; why nothing can arise in the mind without a sensation in the body; what the meaning of Dhamma (Dharma) is. Tape # 2948

**7 p.m. Ear to the Ground**, 2002 Best of Summer. This show features bands recorded in KUNM’s Studio A in the summer of 2002. You’ll hear music by Suite 42, Civitas, Chris Dracup & The Rattlecats, Concepto Tambour, Left Unsaid, Alex Maryol and Shades.

## Sunday, January 12

**11 a.m. A Meeting of Minds.** Host Andy Schmoekler would like to ask you: Have you ever been impressed by someone doing what he knows is right, even at personal cost? Or by someone doing the purely opportunistic thing? Where in your life do you confront the choice between integrity and temptation? How do you choose? Tune in for a conversation about “Moral Integrity,” and call in with your comments.

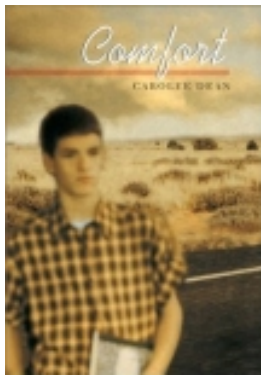
**10:30 p.m. Radio Theater**, “Todd Drucker: Alone in a Deserted Mind” plus “...and the Retrograde Mentor.” Shoestring Radio Theater brings us a mockumentary and a bit of sci-fi.

## Wednesday, January 15

**8:30 a.m. Bioneers**. Part 2: “The Wonders Of Gaia: Nature Is Symbiotic.” “Why do a garden if you can put the green organism to work for you in your body?” This is one of the mind-bending questions Lynn Margulis, one of the greatest scientists, fertile cross-disciplinary scientific thinkers and educators of our epoch, asks. She, ethnobotanist Wade Davis and mycologist Paul Stamets weave tales of amazing plant intelligence like the “Hat Thrower Mushroom,” and animals that eat light. Tape #2920

## Friday, January 17

**8:30 a.m. Southwest Coffeehouse**, Youth Conversations. KUNM’s award winning program visits Valley High School in the heart of Albuquerque with Carolee Dean, author of “Comfort.” Host Ron Chapman facilitates a discussion about adolescent concerns that includes the participation of a number of Valley students. The program uses this fictional coming-of-age story as a springboard for conversation for and about youth. Produced by Leslie Fishburn Clark and Ron Chapman.



**10 p.m. Afropop Worldwide**, “Music Mercado in Salvador de Bahia, Brazil.” The Afropop team travels to the most African part of Brazil – Bahia — for the third annual Mercado, a gathering of artists, record label managers, and concert presenters from all over South America. We’ll stay up all night and listen for the rising stars for you.

## Saturday, January 18

**6 a.m. New Dimensions**, “Humanity With Heart: The New Global Paradigm,” with Kevin Danaher. Hold on to your seats! You are about to depart on a global reality tour with world lecturer and co-founder of Global Exchange, Kevin Danaher. In this “ear opening” dialogue, Danaher addresses the three major pieces of society that influence every aspect of our life — government, our education, and our public airwaves — all of which have been colonized by corporations. We discover that the average American is assaulted with 1,000 to 3,000 commercial



messages per day. Danaher proposes a global values revolution, shifting from the money paradigm to the life values paradigm. “We’re trying to redefine love, from the definition of two people creating an island of happiness in a sea of misery, to a global definition of love. Nobody left out. Everybody into the lifeboat. We’re creating a different definition of what it means to be human on a planetary scale.” Kevin Danaher is the author of several books including “Democratizing the Global Economy” (Common Courage Press) and “Globalize This!” (Common Courage Press). Topics explored in this dialogue: How to free yourself from the “cult of powerlessness”; what patriotism means on a global scale; how to become an active global citizen; how “fair trade” chocolate can fight slavery in West Africa; why more children live to adulthood in Cuba than in Washington D.C. Tape # 2919

**7 p.m. Ear to the Ground**, 2002 Best of Fall. This show features bands recorded in KUNM’s Studio A in the fall of 2002. You’ll hear music by Chronic Logic, Los Brownspots, The Saddlesores, Manzanarez, The Mantis Fist, Tha House Rocka’s and Feels Like Sunday.

## Sunday, January 19

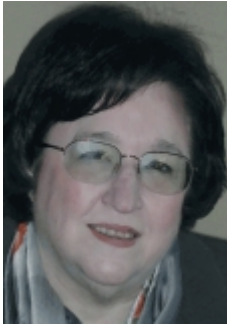
**11 a.m. Sage Health On Call**, “New Frontiers for Oriental Medicine.” Live, call-in talk show. Hosted by Robin Tawney, counselor, body worker, and instructor at the New Mexico School of Natural Therapeutics. He will speak with Larry Horton, Doctor of Oriental Medicine, about the recent expansion of the scope of practice of D.O.M.s in New Mexico. This expansion allows D.O.M.s to offer their patients injections of a variety of products, including bio-identical hormones, vitamins, local anesthetics, homeopathic remedies, and herbal preparations. A member of the New Mexico State Board of Acupuncture, Dr. Horton practices in Albuquerque and specializes in women’s health, infertility, and sports injuries.

**10:30 p.m. Radio Theater**, “Dead on Arrival.” Accountant Frank Bigelow is trying to solve a murder: his own! In a race against time, Bigelow travels from San Francisco to Los Angeles to unravel the tangled web of dishonesty and deception that will reveal his killer. Adapted from the classic 1949 film noir, D.O.A., by Shoestring Radio Theater.

## Wednesday, January 22

**8:30 a.m. Bioneers**. Part 3: “Energy Security: The Growth Of Soft Energy Systems.” The recent energy “crisis” in California triggered the worst reflexes of many business and political leaders who clamored for more fossil-fuel power plants and fewer environmental limits. With the September 11th attacks has come the increased

recognition that how we make and distribute energy is nearly impossible to protect. The Rocky Mountain Institute's Hunter Lovins and renewable energy expert David Katz examine how these challenges present opportunities for dramatic shifts in energy production. Tape #2921



**7 p.m. Lannan Foundation: Readings and Conversations.** Helen Vendler, "A Tribute to William Butler Yeats." Broadcast live from the Lensic Theater in Santa Fe. Helen Vendler is regarded by many as the most influential and probably the most widely read critic of poetry in the United States.

## JanuAry 23 Thursdee

Noon Noir Jazz Show

In this episode "crime reporter" Todd Moore gets his typewriter out of pawn while the thousands of crows who live on top of Oñate Hall have leftover turkey flesh. Dark Weber, host.

## Friday, January 24

**8:30 a.m. Backroads Radio,** "As Time Marches On."

For many of us, the passage of time literally is a blink of an eye. At some point we wake up and realize that years, yes years, have been ticking along and somehow we've gone from childhood to childbearing to grandparenthood. The one constant is the beat of seconds, underscoring all of our transitions. Featured writers and tellers who marvel at this phenomenon are Joan Logghe, Jack Goldberg, Carol Graham and Lucy Moore, with a writing prompt by Judy Goldberg to encourage the expressive spirit. Show producer and host is Judy Goldberg.

**10 p.m. Afropop Worldwide,** "Concert Extravaganza In Dakar, Senegal." A joyous roar rises from 70,000 strong in Senegal's national stadium as the nation's leading artists take the stage. Youssou N'Dour, Baaba Maal, Ismael Lo, Super Diamano; you'll add mbalax to your dance vocabulary.

## Saturday, January 25

**6 a.m. New Dimensions,** "Walking The Indigenous Way In Contemporary Times," with Leslie Gray. How do you find balance and inner peace in a world rocked by instability? In the telling of her story, shamanic psychologist Leslie Gray speaks to the importance of learning from our past, and takes us on a journey to an indigenous world, where the earth is honored, and people live together in peace on the great turtle. She encourages Euro-Americans to "Walk the ground, walk on the bones of your ancestors. Once

you've done that and know where your people come from you can finally have real respect for the land here and the aboriginal traditions." Gray reminds us that the roots of the American Constitution and our democracy are found in the Iroquois Confederacy, a continuing tradition, which from the beginning embraced equal rights and forbade slavery. She urges us to visit sustainable indigenous communities and learn to not take, but learn and give back. Leslie Gray, a Native American, is president and founder of Woodfish Institute. She has a private practice in San Francisco, California and gives workshops and seminars worldwide. Topics explored in this dialogue: How shamanic counseling can benefit you; how you can learn and be more involved with indigenous peoples; learn about the common threads that permeate all shamanic cultures; find out about the first incident of germ warfare in the U.S.; how to meet a Native American shaman. Tape #2909

**7 p.m. Ear to the Ground,** Best of "Blues in the Bathroom." This show features blues artists recorded live in KUNM's ladies bathroom for ETG's own original acoustic blues series. You'll hear music by The Albuquerque Blues Connection, Alex Maryol, Chris Dracup, The Tony Brazis Group, Stan Hirsch and Richard Boals & the Soals.

## Sunday, January 26

**11 a.m. Feminisms,** "The Care Drain: Third World Women, First World Work." Radcliffe University presents a series of lectures that explore the way we live as individuals and as families. Arlie



Hochschild's presentation begins by taking a compassionate, non-judgemental look at the demographic trends and market forces increasing international migration among child care workers. Building on the analysis developed in her highly influential article, "The Nanny Chain," Professor Hochschild asks probing questions about the historically and culturally contingent concept of love. She asks in what sense children can be said to have a right to parental love and how that right might be honored through policy changes in the areas of child care, immigration, and labor. Arlie Hochschild is Professor of Sociology at UC Berkeley. She is the author of "The Time Bind: When Work Becomes Home and Home Becomes Work," "The Second Shift: Working Couples and the Revolution at Home," "The Managed Heart: the Commercialization of Human Feeling," "The Unexpected Community," and "Coleen, The Question Girl: A Children's Story." Her additional duties include Co-Director of the Center for Working Families at UC Berkeley, a research center on working families and "cultures of care."

# PROGRAM UNDERWRITERS

Many thanks to the businesses and individuals listed below, who are helping to underwrite the cost of KUNM's programming. Should you have the opportunity, we hope you'll also thank them for supporting public radio! For information on underwriting opportunities, call 277-3969.

**1uffakind** PO Box 6164, Albuquerque 87197  
www.1uffakind.com

**ABQarts** Albuquerque's free monthly news magazine of the arts. www.ABQarts.com, 286-4368

**Angus McDougall Gallery** 978 San Felipe, Bernalillo; amgallery.com

**Betty's Bath & Day Spa** 1835 Candelaria NW, Albuquerque, 341-3456, bettysbath.com

**Blue Dragon Coffee House**, 1517 Girard NE, Albuquerque, NM 87106, 268-5159

**Bookworks** 4022 Rio Grande NE, Albuquerque, NM 87107, 344-8139

**Campbell Corp.** Luxury homesites along NM 14; 1-877-865-LAND.

**Clark's Pet Emporium** 4914 Lomas NE Albuquerque, NM 87110, 268-5977

**Clark's Pet Supply** 11200 Menaul Blvd. NE Albuquerque, NM, 292-6288

**Coleman Gallery** 3812 Central SE, Albuquerque, NM, 232-0224

**The Cooperage** 7220 Lomas NE Albuquerque, NM, 255-1617

**Corrales Bosque Gallery**, 4685 Corrales Rd., Corrales, NM 87048, 898-3746

**Dan Cron Law Firm, P.C.** 125 Lincoln Ave. Santa Fe, NM 87504, 986-1334

**Fred & Sandra Creek, Realtors** 480-3733

**Crosswinds** Weekly alternative newspaper, free every Thurs. at more than 650 locations in Albuquerque and Santa Fe. 883-4750

**DESIGNER/builder Magazine**  
www.designerbuildermagazine.com

**Eldorado Sun** Free monthly magazine covering local culture, area politics, and global concerns. Santa Fe, 466-4661

**Eye Associates Laser Vision Centers:** Albuquerque, Santa Fe, Farmington and Clovis. 1-800-748-5556

**4 Alarm Service**, 1213 Marigold NE, Albuquerque, 858-0548, 888-858-0548

**The Framing Company**  
2424 Cerrillos Rd., Santa Fe; 438-6000

**Drew Hoffman & Michael O'Dell**  
UBS/Paine Webber, 880-2711

**Dr. Larry Horton, DOM**  
Future Medicine Now; 266-5681  
futuremedicinenow.com

**Isis Medicine** 401 Botolph, Santa Fe, NM 87505, 983-8387

**Jim's Automotive** 4411 Lead SE, Albuquerque, NM 87108, 256-1531

**Jontz, Dawe, Gulley & Crown, law firm**  
500 Marquette NW, Suite 1200  
Albuquerque, NM 87102, 764-5400  
www.jontzlaw.com

**Robert L. Karp MD**, 8500 Menaul NE Ste. A330, Albuquerque, NM 87112, 263-2550

**Keshi** 227 Don Gaspar, Santa Fe, NM 87501 989-8728

**LaMontanita Co-Op** 3500 Central SE, Rio Grande NW at Matthew, Albuquerque

**La Posada**  
2nd & Copper, Albuquerque, 242-9090

**Larry's Hats** 3102 Central SE, Albuquerque, 266-2095

**Lovelace Health Systems** 5400 Gibson SE, Alb., NM 87108, 262-7000, www.lovelace.com

**MarketPlace Natural Grocery** 627 West Alameda, Santa Fe, NM 87501, 984-2852

**Nob Hill Barbershop**  
3408 1/2 Central SE, Albuquerque, 256-0707

**O'Niell's Uptown**, 6601 Uptown Blvd. NE, Albuquerque, 266-2158.

**Pachamama** 223 Canyon Rd., Santa Fe, NM 87501, 983-4020

**Osuna Nursery**  
501 Osuna Rd. NE, Albuquerque, 345-6644

**David Parlato**, instruction on acoustic and electric bass, music theory, composition and jazz improvisation. 872-9481

**Plaza Hotel** 230 Old Town Plaza, Las Vegas, NM 87701, 1-800-328-1882

**Premier Motorcars** 6400 San Mateo NE, Albuquerque, NM , 821-4000

**Roller Design & Printing** 1233 Siler Road Santa Fe, NM 87505, 474-5858

**Santa Fe Hemp**, 105 E. Water St., Santa Fe, 984-2599, www.santafehemp.com

**Season's Rotisserie Grill**  
2031 Mountain Rd. NW, Alb.; 766-5100

**Stone Design** www.stone.com

**Steppin' Out** Free monthly arts & events publication for Central NM,  
SteppinOutNewMexico.com

**Sunrise Springs Retreat** 242 Los Pinos Road Santa Fe, NM 87505, 471-3600

**TEMA Contemporary Furniture** 7601 Montgomery NE, Albuquerque, NM 87109 275-2121, www.tema-usa.com

**Thirsty Ear American Icon Series**  
Presenting Doc Waton, Jan. 9, Lencic in Santa Fe, and Jan. 10, Highland in Albuquerque; Odetta, Jan. 16, Lencic in Santa Fe, and Jan. 17, Highland in Albuquerque. 473-5723  
thirstyearfestival.com

**TIAA-CREF** financial management,  
www.tiaa-cref.org

**Velocitus**, broadband solutions and internet connectivity for business; www.velocitus.net

**Walther and Larkin, LLP**, divorce and family law; Albuquerque 889-8240, Santa Fe 984-0097

**Weekly Alibi** Albuquerque's news and entertainment weekly, free every Thursday at more than 800 locations; 346-0660;  
www.alibi.com

**Weems Galleries and Framing**  
Eastdale Shopping Center, 2801-M Eubank NE, Albuquerque, NM 87112, 293-6133; and in Plaza Don Luis - Old Town, 303 Romero NW, Albuquerque, NM 87104 764-0302

**Whole Foods Market**, 753 Cerrillos Rd., Santa Fe, 992-1700; 5815 Wyoming NE, Albuquerque

**Wild Birds Unlimited**, 7200 Montgomery NE, Albuquerque; 9231 Coors Blvd. NW, Albuquerque; 518 Cordova Rd., Santa Fe

**Zip It**, local advertising for local businesses; Albuquerque, 440-8877

**10:30 p.m. Radio Theater**, “Fall, Don’t Splat” and “The Footsteps in the Jungle.” Shoestring Radio Theater brings us a tale inspired by “Wayne’s World” and the Bill & Ted movies. “Fall, Don’t Splat” chronicles the turbulent skydiving expedition of Man and Dude, two goofy Los Angeles airheads. Then, an adaptation of Somerset Maugham’s story dealing with intrigue in colonial Malaya.

## Wednesday, January 29

**8:30 a.m. Bioneers.** Part 4: “Light At The Edge Of The World: Reinventing The Poetry Of Diversity.” Author/ethnobotanist/anthropologist Wade Davis has been from Borneo to Tibet to Haiti, from the high Arctic to the Andes and Amazon as an explorer of our planet’s wondrous cultural and biological diversity. He has found a fire burning over the Earth, taking with it plants and animals, cultures, languages, ancient skills and visionary wisdom. Quelling this flame



and reinventing the poetry of diversity is the most important challenge of our times. Tape #2921

## Friday, January 31

**8:30 a.m. Peace Talks.** The first installment of a new series by independent producer Paul Ingles and Suzanne Kryder. Peace Talks investigates how people can make peace and pursue non-violent solutions to conflict within themselves, their families and communities, and the world. Each program will feature a top practitioner in peace studies, conflict resolution or negotiation in conversation with host Suzanne Kryder. Invited guests from the community will also question the guest during part of the program. In these tumultuous times on the planet, the Peace Talks series will offer listeners both skills to address the conflict in their own lives and information about conflict resolution approaches and programs that are working. Today’s guest: Victor LaCerva, MD, Medical Director of Maternal and Child Health with the New Mexico Department of Health.

**10 p.m. Afropop Worldwide**, “An Afropop Dance Party For Your Winter Blues.” Our Alaska friends say the days are getting longer, but still the winter is wearing on you and provisions are running low. Time for an Afropop Dance Party! We’ll dust off some trusty Afropop vinyl classics and crack open the latest world dance fusion CDs. Let’s scare off the looming ghosts and have ourselves a ball!

### Talk Back to Your Radio

NPR mailing address: National Public Radio, 635 Massachusetts Ave. NW, Washington D.C. 20001-3753

**NPR Audience Services** 1-202-414-3232

**National Public Radio, transcripts and tapes:**  
1-877-NPR-TEXT (1-877-677-8398)

Transcripts are \$10, plus \$1.50 shipping and handling, tapes are \$12.95, plus \$2.50 shipping and handling. Programs:

**Morning Edition, All Things Considered,  
Weekend Edition, Weekend All Things Considered**

Transcripts can also be accessed on the Nexus database.

NPR listener comment lines:

<b>Morning Edition</b>	202-842-5044
<b>Performance Today</b>	202-842-3522
<b>Weekend Edition Sunday</b>	202-371-1775

Internet & email addresses, national programs:

**Afropop Worldwide:** afropop@pri.org  
**All Things Considered:** atc@npr.org  
**Living on Earth:** loe@npr.org  
**Morning Edition:** morning@npr.org  
**Pacifica:** http://www.pacifica.org  
**Performance Today:** perftoday@npr.org  
**StarDate:** stardate@astro.as.utexas.edu  
 http://www.as.utexas.edu/pio/pio\_page.html#StarDate  
**This American Life:** http://www.thislife.org  
**This Way Out:** tworadio@aol.com  
**Weekend All Things Considered:** watc@npr.org  
**Weekend Edition Sunday:** wesun@npr.org

### KUNM e-mail addresses:

KUNM@kunm.org  
 Mary Bokuniewicz, Development Director bucky@unm.edu  
 Marcos Martinez, News Director martinez@unm.edu  
 Richard S. Towne, General Manager gmkmun@unm.edu  
 KUNM home page: http://kunm.org  
 Ear to the Ground: kunmear@unm.edu  
 Radio Theater: art@unm.edu

FAIR (Fairness and Accuracy in Reporting, produces **Counterspin**, Tuesdays at 8:30 a.m.), 130 W. 25th St., New York, NY 10001. For subscription information on their magazine *Extra*: 1-800-847-3993

**Living on Earth** comment line: 1-800-218-9988. Mailing address: Living on Earth, PO Box 639, Cambridge, MA 02238. Tapes/transcripts available, \$10.

Inquiries/orders for **Pacifica** programs: 1-800-735-0230

**Alternative Radio:** 1-800-444-1977; PO Box 551, Boulder, CO 80306; ar@orci.com

**StarDate:** 1-800-STARDATE; 2609 University Ave. #3.118, Austin, TX 78712.

**This Way Out**, PO Box 38327, Los Angeles, CA 90038; phone 818-986-4106.

**Native America Calling:** Produced by Koahnic Broadcast Corp. at KUNM; 277-5354. Call-in number: 1-800-99-NATIV.  
 For cassette tapes: 505-277-5354.

**WINGS** (Women’s International News Gathering Service): PO Box 33220, Austin, TX 78764; 512-416-9000; wings@igc.apc.org