



# ZOUNDS!

**KUNM 89.9 FM** • **AUGUST 2011**

89.9 ALBUQUERQUE • 88.7 SOCORRO • 89.9 SANTA FE • 90.9 TAOS • 90.5 CIMARRON/EAGLE NEST  
91.9 ESPANOLA • 91.9 LAS VEGAS • 91.9 NAGEEZI • 90.5 CUBA



**Get drawn to the light.  
Moth Radio Hour.**

**Sundays in August on KUNM**

## KUNM Operations Staff

Kaylina Abeyta.....Youth Radio Assistant  
 Elaine Baumgartel.....Reporter  
 Carol Boss.....Membership Relations  
 Tristan Clum.....Program Director  
 tMatthew Finch.....Music Director  
 Roman Garcia.....Production Director  
 Sarah Gustavus.....Reporter  
 Jonathan Longcore.....IT Support Analyst  
 George Luna-Peña.....Youth Radio Special Project Coordinator  
 Linda Morris.....Senior Fiscal Services Tech  
 Cris Nichols.....Membership Coordinator  
 Mary Oishi.....Development Director  
 Roberta Rael.....Youth Radio Project Manager  
 Rob Raucci.....Operations Manager  
 Linda Rodeck.....Underwriting Marketing Specialist  
 Chanda Shaw.....Community Relations Coordinator  
 Mike Stark.....Chief Engineer  
 Richard S. Towne.....General Manager  
 Kamaria Umi.....Youth Radio Production Tech

## KUNM Student Staff

Candace Miller-Murphy.....Programming Assistant  
 Lysette Gutierrez.....Music Assistant  
 Sam Isobel.....Music Assistant  
 Danya Mustafa.....Youth Radio Blog  
 Scott Shuker.....PSAs/Welcome Center  
 Ashley Smiley.....Youth Radio Blog  
 Kevin Smith.....Production Assistant  
 Carlos Vingeras-Gallegos.....Production Assistant

## KUNM Programming and Support Staff

Call 277-4516 for information on volunteer opportunities at KUNM.

Gahdah Abdeljawad	Ruby Blue Cruz	Carly Granger
Tara Abeita	Chris Lamont Cyrus	Joe Green
Adam Aguirre	Kabir Daitz	Taylor Griffin
Brandi Ahmie	Victor Davarria	Maureen Grindell
Marilyn Altenbach	Jenny DeBouzek	Jonathan Guzmán
Robyn Anderson	Rosemarie DeLeo	Wellington Guzmán
Miles Anderson	Scott Denton	Ron Hale
Dennis Andrus	William Delzell	Louis Head
Toby Atencio	Ellen Dornan	Andrew Hebenstreit
James Baca	David Doty	Pamelya Herndon
Christina Baccin	David Dunaway	Edwin Herrera
Bill Baker	Jered Ebenreck	Peggy Hessing
Jonathan Baldwin	Amy Ewing	Cindy Hong
Spencer Beckwith	Missy Felipe	Josh Horton
Martin Belgarde	Alice Fernando-Ahmie	David House
Jane Blume	Damien Flores	David Hughes
Mary Bokuniewicz	Dick Fredericksen	Luke Iha
Eli Brown	Matt Galindo	Paul Ingles
Ron Bryan	Ignacio Gallegos	Tyler Innis
John Burgund	Luna Olavarria Gallegos	Mary Ellen Ipiotis
Derek Cadwell	Nathan Girdner	Jim Jaffe
Arcie Chapa	Craig Goldsmith	Bashar Jawad
Cecilia Chavez	Henry Gonzales	Deja Jenkins
Leo Chinana	Jason Gonzales	Jeremy Jones
Rufus Cohen	Paul Gonzales	Carrie Jung
Neal Copperman	Sarah Gallegos	Megan Kamerick
Dan Cron	Russell Goodman	Colleen Keane

## KUNM Radio Board

### UNM Faculty Representatives:

Richard Hayes  
 John Scariano

### UNM Staff Representative:

Carolyn Hartley

### Elected Community Reps:

Richard Bock  
 Lora Lucero  
 Jenny Lusk  
 Sherry Tippet

### Appointed by UNM Provost:

Robert M. White  
 Julia W. So  
 Cara Wilson

### ASUNM Representatives:

Connor Lites

### GPSA Representative:

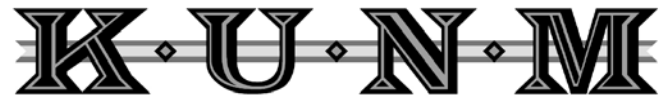
Theresa Rogers

### Volunteer Representative:

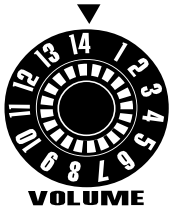
Henry Gonzales

### Ex-Officio Members:

Richard S. Towne, General Mgr.  
 Tristan Clum, Program Director



Brandon Kennedy	Shinenn Nair	Keith Smith
Ramona King	Mary Nakigan	Stephen Spitz
Randy Kolesky	Peter Nathanson	Karl Stalnaker
Imani Iemanja Lambert	Luna Natoli	John Steiner
Marina LaPalma	Harry Norton	Claude Stephenson
Barry Lauesen	Michael Orgel	Katie Stone
Mark LeClaire	Tim Oswald	Norman Strizek
David Lescht	Robert Ottey	Mario Telles
Glenda Lewis	Sidsel Overgaard	Jerome "Putnay" Thomas
Ali Liddel	Sebastian Pais	Jerry "Eeyo" Thompson
Naomi Lippel	Mark Pallardy	Ken Tohee
Patti Littlefield	Travis Parkin	Victor Torres
Andrew Loerch	Kent Paterson	Maya Key-Towne
David Lopez	David Paytiamio	Anthony "Ijah" Umi
Linda Lopez McAlister	David Percival	Lucio Urbano
Susan Loubet	Salome Perez	Floyd Vasquez
Scott MacNicholl	Christian Pincock	Jason Waldron
Bobb Maestas	Guillermina Quiroz	Cecilia Webb
Greg Markham	Roberta Rael	Mark Weber
Lucia Martinez	Tom Rapisardi	Jonathan Weiss
Sofia Martinez	Phill Remick	Eli Willard
Rachel Maurer	Peter Rice	Chris Woodworth
Don Mclver	Janet Riley	
Garrett McDonnell	Philip Riley	
Nicholas Meyers	Jena Ritchie	
Peter Mezensky	Kelvin Rodriguez	
Zakary Modell-O'Donell	Lee Ross	
Francis Montoya	Giovanna Rossi	
LeRoy Montoya	Riti Sachdeva	
Victoria Montoya	Nia Salgado	
Nola Daves Moses	Melanie Sanchez	
Evan Moulson	Travis Sandoval	
Maria Munguia	John Scrocco	
Danya Mustafa	Wykera Skidmore	



KUNM 89.9 FM  
Zounds! is available online at kunm.org.



AUGUST 2011

## So 21st Century!

🎧 Playlists

🎧 Podcasts

🎧 2 - Week Archive

### At KUNM.ORG

#### CONTENT:

Justice at Stake.....	3
Sarah Gustavus Says Good-bye.....	4
KUNM About to Turn 45.....	5
KUNM Program Grid .....	6
Radio Highlights .....	8
Program Underwriters .....	12

#### CONTACT US!



### K · U · N · M

Business line: (505) 277-4806,  
toll-free 1-877-277-4806

Request line: (505) 277-5615,  
toll-free 1-888-277-5615

Member Services: (505) 277-3968,  
toll-free 1-877-277-4806

Mailing address: MSC06 3520,  
1 University of New Mexico,  
Albuquerque, NM 87131-0001

Email your comments or  
questions to [kunm@kunm.org](mailto:kunm@kunm.org).  
Your email will be  
forwarded to the appropriate  
staff person.

## Rural Broadband: Justice at Stake

By Richard S. Towne, KUNM General Manager

I've been thinking quite a lot about rural communities and broadband internet services. Hope you will give some thought and learn more about this issue. There are high social justice impacts surrounding the issue and we need to focus our help to rural communities so they don't roll down the wrong side of the digital divide.

Radio has always been an effective means of reaching rural communities. Since radio flies through the air, it does not need wires, and right-of-way, and local policies leading to efficient and effective delivery of our public service offerings. Public radio is nearly universal, although notable coverage gaps exist in rural parts of New Mexico, notably in McKinley County, Catron County, the mountainous areas of northern New Mexico, and the isolated desert communities down south. These areas could be served by radio with relatively modest investments. Consider KUNM's rural expansion in 2008, bringing first service to Rio Arriba County and small communities around Socorro, Las Vegas, and Taos.

Broadband is not at all like radio. It needs wires, and rights-of-way, and ordinances, and oversight. The provisioning of broadband services require small, rural communities to provide significant resources and effort. In an urban setting city government would be the center for broadband policies. There are enough "customers" to provide a viable market place for commercial broadband providers. The "customers" pay enough in fees and taxes to support government's ability to regulate and oversee the broadband services.

Rural communities just don't have the clout or the "customers." They will be by-passed by broadband providers or they will be dictated to by providers in a way that prices broadband far above the budgets of rural households and businesses. There are no marketplace incentives for a broadband provider to invest in building out expensive infrastructure to bring in the broadband service.

So radio does not have heavy infrastructure needs. But broadband does. It's easy for KUNM to reach rural communi-

# KUNM News Reporter Sarah Gustavus Bids Farewell

By Sarah Gustavus, KUNM News Reporter

This fall, I will step out of my role as *All Things Considered* host on KUNM to attend graduate school in London. This will give me a chance to pursue several dreams - to live abroad, study media in Europe and earn a Master's degree.

Growing up on a cattle ranch in west Texas, I dreamed of traveling abroad. My grandmother did an around-the-world trip before I was born. The first thing I did every time I visited was go to the shelf where she displayed her international bell collection. I'd ring them and imagine going to the places they represented. In the last decade, I've visited 28 countries. I backpacked through Southeast Asia and traveled solo in Tanzania. I stayed on an island with a group of fishermen in Belize and watched them skin a shark at night, with only the light of a small flashlight to navigate each cut. I saw a future for myself in public radio during a visit to [Bush Radio](#) in Cape Town, South Africa.

I've also worked to combine my interest in travel with my journalism career. I went to Germany on a Fulbright exchange to discuss media issues in the European Union and the United States. The Berlin Capital Program was my first exposure to the stories of Turkish immigrants in Germany. This year, I went to Turkey with a group of New Mexico journalists, which gave me a chance to hear from the other side of Turkish migration. Immigration has been the focus of my reporting this year for KUNM. I just finished a fellowship with the Institute for Justice and Journalism. I'm excited about the opportunity to expand my knowledge about immigration in Europe.

I'm incredibly grateful for the past three years in New Mexico. The people I met in my reporting inspired me to look deeper at the history behind current stories. My time here has made me a better reporter. It has been an honor to be part of the community. I will continue to have a relationship with the station and a connection to New Mexico. Thank you to everyone who has helped me, either personally or professionally, and for the people who have shared their stories with me. 🙏

"Justice" continued from Page 3

ties. Not so easy for broadband. Here is where my concerns intersect. I listen to the radio and work online. Each and every month, I do increasingly more work online as broadband becomes smarter, faster, and cheaper. That broadband trajectory is not going to change, only accelerate. Those people without broadband and rural communities without broadband policies and/or infrastructure are being left further and further behind.

The Center for Media Justice ("Because the Power to Communicate belongs to Everyone") in Oakland, CA is doing some great work on this issue. In June the Center brought together 20 individuals from 17 organizations across the country to examine the role of wired and wireless broadband access in rural communities, what's at stake in broadband policy, and what can be done to improve policy conditions through collaborative advocacy. The report and recommendations from this convening were published in July. I highly recommend you find it at the Center for Media Justice website or click through this link ["Urban to Rural; What Can We Learn Together" by Amalia Deloney](#)



Deloney takes on the findings and recommendations of rural participants. Her report is not overly long and explains the issues and needs in far more articulate ways than I can. This is because she is listening to people in rural communities. She writes well. Her report is designed for use by social justice advocates, community stakeholders, practitioners, and legislators. There are additional local resources available through the [Media Literacy Project](#) based in Albuquerque.

KUNM listeners value non-commercial radio as an essential communications infrastructure tool to serve our many communities across central and northern New Mexico. We must now expand our perceptions to include broadband as part of that same essential communications infrastructure. I hope you will engage in the effort to learn about the issues with our rural citizens and engage in solutions that promote the common good for rural and urban communities everywhere. Thanks in advance for your help with this. 🙏

# KUNM About to Turn 45!

By Mary Oishi, KUNM Development Director



Photo Credit: Kyle Zimmerman Photography

My daughter just celebrated her 30<sup>th</sup> birthday. (I know, I know—I’m revealing *my* age here as well). Milestone birthdays are always a great time for reflection: all the memories, the challenges and victories, the people who have come into our lives and gone—as well as those who are still part of it. It’s also a natural time to assess, “Where do I want to go from here?”

Well, KUNM is also approaching a milestone birthday. This October marks 45 years of broadcasting from the University of New Mexico. It has been a long and amazing journey since the small but enthusiastic beginning of a few students broadcasting just to the UNM campus, to a station that serves 2 of New Mexico’s 3 largest population centers as well as over 150 smaller communities, and in the past few years became accessible to the world at [kunm.org](http://kunm.org).

In this column, between now and October, I plan to feature some highlights and collective memories from people who have been involved with KUNM over the years as staff, volunteers, volunteers/staff, founders, and loyal listeners. If you are one of those long-time listeners, I hope you will share your KUNM memories with me at [maryoishi@kunm.org](mailto:maryoishi@kunm.org). I can’t promise I will print every story, but I will do my best to share as many as I can. Please try to keep your contribution to 1 paragraph, but certainly no more than 2 or 3 paragraphs so I can include as many as possible.

Also feel free to post your story on KUNM’s Facebook page. I can easily copy your words over to this column. I’m also interested in old photographs, and in hearing from DJs who may no longer be doing a show here but have memories and photographs to share.

The kinds of things I’m looking for from listeners are stories like a gentleman told me when I went to the Santa Fe Bluegrass Festival a few years ago. He said he moved to Santa Fe after getting his graduate degree from UNM. Back in those days, he told me, people made decisions about where to buy property in Santa Fe based on whether or not they could get KUNM’s signal at that location!

This kind of on-the-ground history fascinates me. KUNM has always been a labor of love from its volunteer program hosts, the UNM students, the professional staff, and the listeners/contributing members. Something so long-lived and

massive that is people-driven and community-powered always contains compelling stories in the weave of its past.

I’m thinking of Mello, one of the Tuesday afternoon Freeform hosts, who started listening to KUNM through earphones in her high school class, and got really excited about what she was hearing on KUNM and eventually came here to learn how to host a show.

I’m also thinking of the wonderful Melissa Sanchez who stumbled on KUNM just flipping through the dial—and became so hooked on KUNM’s variety of music and the education she was getting that she donated “Old Blue,” her cherished ’64 Cadillac. I recently met her daughter while out listening to live music and she remarked how her mother has KUNM on all day, every day, everywhere—even listens to the 2-week archive! These kinds of stories warm my heart. It is for Mello and Melissa—and future Mellos and Melissas—that we do what we do here every day.

So let us know how KUNM has touched your life. We are gearing up to really celebrate in the Fall. We want YOU to be a big part of that celebration. 🎉

**Send Your  
Favorite KUNM  
Memory  
to [maryoishi@  
kunm.org](mailto:maryoishi@kunm.org).**



Monday

Tuesday

Wednesday

Thursday

Friday

Saturday

Sunday

5:00 AM	<b>morning edition</b> 5-8:30am M, TU 5-8am W, TH, F					<b>overnight freeform</b>		5:00 AM	
6:00 AM						new dimensions 6-7am	<b>train to glory</b> 6-9am		6:00 AM
7:00 AM						weekend edition 7-9am			7:00 AM
8:00 AM	latinoUSA 8:30-9am	counterspin 8:30-9am	living on earth 8-9am	call-in program 8-9am	public affairs 8-8:30am	<b>children's radio hour</b> 9-10am		8:00 AM	
9:00 AM	<b>performance today 9-11am</b>  a 5-minute feature on local events, airs at 9:01am and 10:01 am.							<b>weekend edition</b> 9-11am	
10:00 AM	<b>native america calling 11-12pm</b>					folk routes 10am-12pm	KUNM specials 11-12pm		
11:00 AM						<b>all that jazz 12-1:30pm</b>			
12:00 PM	<b>freeform 1:30-4pm</b>								
1:00 PM						grassroots nm 3:55-4pm			
2:00 PM	<b>democracy now 4-5pm</b>								
3:00 PM						<b>all things considered + KUNM local news</b> 5-7pm			
4:00 PM	<b>espejos de aztlán</b> 7-7:30pm <b>raices</b> 7-10pm								
5:00 PM						<b>home of happy feet</b> 7-10pm			
6:00 PM	<b>the blues show</b> 7-10pm								
7:00 PM						<b>iyah music</b> 7-10pm			
8:00 PM	<b>salsa sabrosa</b> 7-10pm								
9:00 PM						<b>corazon tanguero</b> 9:30-10pm, 1st&3rd mondays			
10:00 PM	<b>global music</b> 10pm-1am								
11:00 PM						<b>music to soothe the savage beast</b> 10pm-1am			
12:00 AM	<b>beale street caravan</b> 10-11pm								
1:00 AM						<b>tombstone rock</b> 11pm-2am			
2:00 AM	<b>freeform</b> 7 days a week								
3:00 AM						<b>coffee express</b> 1-3am			
4:00 AM	KUNM runs many specials and seasonal programming. Please check our website at <a href="http://www.kunm.org">www.kunm.org</a> for info about special programming.								



# PROGRAM LISTENINGS

**Afropop Worldwide** Fri. 10 p.m. Music with an African influence from around the world.

**All That Jazz** M-F noon. Jazz, straight ahead to fusion.

**All Things Considered** M-F 5 p.m., Sat. & Sun. 5 p.m. Award-winning news magazine from NPR.

**Alternative Radio** Sat. 6 p.m. The view from the other side, from some of the most progressive writers, thinkers and activists of our time.

**Beale Street Caravan** Wed., 10 pm, Blues from Memphis and around the globe.

**The Blues Show** Wed. 7 p.m. The spectrum of blues music, plus interviews, live performances, and blues news.

**Call-In Show** Thur. 8 a.m. Live interviews with community leaders; call in your comments and questions at 277-KUNM.

**CCNS Update** Sat. 8:34 a.m. Concerned Citizens for Nuclear Safety presents the latest local, national and international news about nuclear issues.

**Children's Radio Hour** Sat. 9 a.m. Stories and music for children of all ages.

**Coffee Express** Fri. 1-3 a.m. Live, improvised music, voice, effects and sound collages, combined with on-air phone callers, CDs and records, tape loops, internet audio, etc. It's not jazz, but it is caffeinated.

**Corazón Tanguero**, 1st and 3rd Mondays, 9:30-10 p.m. Music/Culture program on Argentine Tango, featuring works from the Old Guard of the 1920s through the Golden Age of the 30s and 40s and beyond.

**Counterspin** Tues. 8:30 a.m. A critique of the week's news coverage by other media, from FAIR.

**Cyberage** Sun. 1-3 a.m. Innovative electronic music of all sub-genres; elektro, industrial, ebm, ambient, power noise, synthpop, techno and drum 'n' bass.

**Democracy Now** M-F 4 p.m. From Pacifica, diverse commentators focus on the issues affecting individuals and society.

**Ear to the Ground** Sat. 7 p.m. A local music showcase, featuring live performances by local talent.

**Espejos de Aztlán** Mon. 7-7:30 p.m. Bilingual arts and public affairs program with interviews.

**Folk Routes** Sat. 10 a.m. A weekly sampling of the best in folk, blues to bluegrass and beyond.

**Freeform** Music M-F 1:30-4 p.m.; overnights. A diverse showcase of KUNM's music library, uncovering common roots in music from different places and times.

**Fresh** Thur. 10 p.m. New Mexico's international electronic and "new" music program featuring guest composers, artists and interviews.

**Global Music** Mon. 10 p.m. Exploration of music from around the world.

**Home of Happy Feet** Tues. 7 p.m. Folk music in the broadest sense of the term. Bluegrass, blues, cajun, zydeco, western swing, rockabilly, Tex-Mex, and more!

**House that Jazz Built** Sun. 11 p.m. Uncompromising creative music from the past 30 years.

**Iyah Music** Thur. 7 p.m. Reggae and roots; a spectrum of African-influenced music.

**KUNM Specials Sun.** 11 a.m. From public affairs to holiday specials, the latest and best in local and national production.

**Latino USA** Mon. 8:30 a.m. English-language radio journal of Latino news and culture.

**Living on Earth** Wed. 8 a.m. Weekly environmental news and information program, from NPR.

**Morning Edition** M-F 5-8:30 a.m. Award-winning morning news magazine from NPR.

**Music to Soothe the Savage Beast** Tues. 10 p.m. Progressive and indie rock culled from new releases you're not likely to hear anywhere else. Plus live and recorded local music.

**Native America Calling** M-F 11a.m. The nation's first live daily call-in program by, for, and about native people. 1-800-99NATIVE.

**National Native News** M-F 11:01 a.m. 5-min. newscast focusing on Native American issues.

**New Dimensions** Sat 6 a.m. Dialogues presenting a diversity of views from many traditions and cultures, with practical knowledge and perennial wisdom for a more healthy life of mind, body and spirit.

**News at Noon** M-F noon. News update from NPR.

**Other Voices, Other Sounds** Sun. 9 p.m. Contemporary music & sound art with an international perspective.

**Performance New Mexico** Local arts calendar, M-F 9:01-9:06; feature on upcoming local event, W-F 10:01-10:06; calendar listings on the web at [kunm.org/perfrm](http://kunm.org/perfrm).

**Performance Today** M-F 9 a.m. A two-hour program of classical music performances, recorded live; from NPR.

**Psychedelic Radio Head-Shoppe** Sat. 10:30 p.m. Deep tracks from the rock 'n' roll underground. Electric music for the mind and body from the '60's & '70's.

**Radio Theatre** Sun. 6 p.m. From traditional to experimental, set in the theater of the mind.

**Raíces** Mon. 7 p.m. & Sat. 2 p.m. Latin American Freeform music, all genres of Hispanic music.

**Route 66** Sat. 8 p.m. "Oldies," commentary, dedications & requests, and special guests.

**Salsa Sabrosa** Fri. 7 p.m. Afro-Caribbean-influenced music. Hot!

**Singing Wire** Sun. noon. Native American music, traditional to today's sounds of folk, C&W, rock.

**Spoken Word** Sun. 8 p.m. You know the power of words; now hear the power of poetry. Y mas!

**StarDate** M-F 7 p.m., Sat. & Sun. 6 p.m. Two-minute travelguide to the universe. What to look for in the night sky, tales of ancient skylore.

**Street Beat** Fri. 11 p.m. New Mexico's source for live turntablism, mixing and scratching a variety of rare funk, rock, jazz, and soul breaks, from the old to the new.

**This American Life** Sun. 4 p.m. A quirky look at modern life through fact, fiction and found tape.

**This Way Out** Fri. 8:30 a.m. International lesbian and gay news magazine.

**Tombstone Rock** Wed. 10 p.m. Ear-shredding metal music other stations are afraid to play.

**Train to Glory** Sun. 6 a.m. Sunday morning Black gospel music featuring traditional, contemporary, and local church choirs.

**Voces Feministas** First Sat. every month, noon. Features the voices of third world women, and women of color.

**Weekend Edition** Sat. 7 a.m., Sun. 9 a.m. Weekend news magazine from NPR.

**Women's Focus** Sat. noon. Women's magazine on politics, art, culture, news, and information.

**Youth Radio** Sun 7 p.m. The voices of NM teens via news, commentary, interviews and music.



### Wednesday, August 3

**10 p.m. Best of ¡Globalquerque!** Khaira Arby and Deolinda. Every September, New Mexico's Celebration of World Music



**Khaira Arby**  
Photo Credit: Globalquerque

and Culture takes over the entire campus of the National Hispanic Cultural Center. The best artists from around the world descend on Albuquerque to perform alongside artists representing New Mexico's Hispanic and Native American heritage. Get ready for the 7th Annual festival (which will be broadcast live on KUNM September 16 and 17) by reliving moments from previous festivals. This week's

show will feature interviews and performances by Khaira Arby (Mali) and Deolinda (Portugal) from ¡Globalquerque! 2010. The show was produced by Southwest Stages in collaboration with KUNM, Native Voice 1 and ¡Globalquerque! For more information, visit [globalquerque.com](http://globalquerque.com).

### Friday, August 5

**8:30 a.m. University Showcase.** Medical Collaboration in Africa – Another Great Idea. Our guests are Dr. Robert Glew, Professor of Biochemistry and Microbiology and Research and Associate Professor Dorothy VanderJagt, Nutritionist. Both are from the Department of Biochemistry and Molecular Biology at the UNM Medical School. Drs. Glew and VanderJagt developed a "Scholars Program" that introduced students from the University of New Mexico to health issues in Nigeria. Their research was done in collaboration with young physicians and faculty at the University of Jos. Our guests explain why they chose the University of Jos for the study of maternal/child health problems, fatty acid metabolism, sickle cell anemia, maternal/child health, nutrition assessment, and body composition in sub-Saharan Africa. Professors Glew and VanderJagt discuss their remarkable achievements made both in Africa and New Mexico as a result of their research collaboration. Produced by Dick Frederiksen.

### Saturday, August 6

**6 a.m. New Dimensions.** Spontaneous Remission for a Terminally Ill Planet, with Bruce Lipton, PhD & Steve Bhaerman. Can the terminal condition of our planet experience a spontaneous remission? Every day, it appears, the news about climate change is worse, as



**Bruce Lipton**  
Photo Credit: New Dimensions

is the precarious balance of global politics. We seem bent on destruction, and it's often difficult to see how we can possibly turn things around before it's too late. But as bad as things are,



**Steve Bhaerman**  
Photo Credit: New Dimensions

Bruce Lipton and Steve Bhaerman see our dire state as evidence of an evolutionary shift as profound as the transformation of a caterpillar to a butterfly. The earth and its biosphere is a living entity, they say, and our human species has the power to generate a cosmic transition to a new way of being based on community and harmony. Sound too good to be true? Cellular biologist Lipton has the science to back it up, and

Mr. Bhaerman gives us the prescription for change. To learn more about the work of Bruce Lipton go to [www.BruceLipton.com](http://www.BruceLipton.com); for Steve Bhaerman go to [www.WakeUpLaughing.com](http://www.WakeUpLaughing.com). Program #3318.

### Sunday, August 7

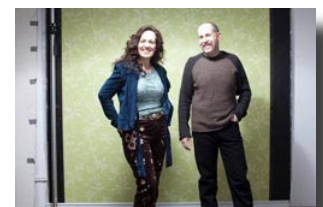
**11 a.m. Moth Radio.** The star of television's long-running children's show, Blue's Clues, details his complicated relationship with fame; a 13-year-old girl from Somalia immigrates to the US and thrives, but struggles to keep her troubled sister in the country; on the eve of her high school reunion, a woman learns that her husband "thinks he might be gay." Hosted by Tom Shillue.



**6 p.m. Radio Theater.** Ruby 7: Dream Weaver Dream Deceiver - Part 1. The Galactic Gumshoe Ruby arrives on the planet of Möbius-Morpheus, a planet of dreamers. The Morpheusians believe that since life is a dream, they may as well dream up their own dreams. But something is happening, they are experiencing for the first time in their life, Fear. They suspect humans, who tend to be fearful, are behind this. Ruby is hired to find who, how and why? From ZBS.

### Wednesday, August 10th

**10 p.m. Best of ¡Globalquerque!** Nation Beat and Saints & Tzadiks. See August 3rd listing for more about ¡Globalquerque! 2011. This week's show will feature performances by Nation Beat and Saints & Tzadiks from ¡Globalquerque! 2009. The show was produced by Southwest Stages in collaboration



**Saints & Tzadiks**  
Photo Credit: Globalquerque

Continued from Page 8

with KUNM, Native Voice 1 and ¡Globalquerque! Nation Beat will be performing at the ¡Globalquerque! night at the Santa Fe Bandstand with The Brazil Project on August 15th. They will also be at Route 66 Casino on August 13th.

## Friday, August 12

**8:30 a.m. New Mexico People, Places & Ideas.** In June, we looked into the largest pre-natal to 3 home visiting program in the United States. In that St. Joseph program, based in Albuquerque and headed by Allen Sanchez, first time pregnant women receive weekly home visits by a trained health educator. The visits are an opportunity for new parents to learn about encouraging infant growth and development, selecting books & toys that teach, and nurturing positive relationships. At least six similar 0 to 3 “first born” home visitation programs have now begun in New Mexico and our Legislature is being asked to approve additional distributions from the Permanent Fund which could lead to almost \$200 million per year in additional investments in early childhood (0 – 5 years) programs. This month, host Stephen Spitz sits down with one of the leading authorities in the U.S., Dr. M. Rebecca Kilburn, director of Child Policy for the Rand Corporation, and asks whether such huge expenditure in early childhood programs makes scientific and economic sense. The discussion will focus on research into the effectiveness of early childhood programs and whether any state-wide programs, such as those envisioned, have been tried successfully. Produced with the assistance of Joe Green.

## Saturday, August 13

**6 a.m. New Dimensions.** A Brain that Knows How to Be Happy, with Rick Hanson, PhD. Why is your brain pre-programmed to focus on negative information? How can you manage depression or improve your self-confidence in just

a few minutes a day? Each day you face the highs and lows of your own state of mind, as well as the onslaught of external threats from terrorist alerts, earthquake warnings, and economic downturns. Your mind is in a constant state of arousal, and your happiness and your physical health pay the price. But neuro-psychologist Rick Hanson says that you have enormous power, not only to change your frame of mind, but to physically alter your body, and even the structure of your brain by taking charge of your thoughts. In this interview, Dr. Hanson offers simple

techniques you can use, in just a few minutes a day, to change your mind. To learn more about the work of Rick Hanson go to [www.BuddhasBrain.com](http://www.BuddhasBrain.com). Program #3336.



**Rick Hanson**  
Photo Credit: New Dimension

## Sunday, August 14

**11 a.m. Moth Radio Hour.** Pulitzer Prize-winning journalist Phil Caputo shares how a bullet wound helped him heal his soul; a little girl learns what love is about after surviving a terrible car accident; a young man and his father succumb to guilt at the animal shelter; and a burnt-out corporate executive tries to shake her Type-A personality at art school. Hosted by Jenifer Hixson, Senior Producer at The Moth.

**6 p.m. Radio Theater.** Ruby 7: Dream Weaver Dream Deceiver - Part 2. See August 7th listing for details.

## Wednesday, August 17

**10 p.m. Best of ¡Globalquerque!** Louis Gonnig and Maria de Barros. See August 3rd listing for more about ¡Globalquerque! 2011. This week’s show will feature interviews and performances by Louis Gonnig (Zuni) and Maria de Barros (Cape Verde) from ¡Globalquerque! 2009. The show was produced by Southwest Stages in collaboration with KUNM, Native Voice 1 and ¡Globalquerque!

## Friday, August 19

**8:30 a.m. Back Roads Radio.** Worn out Ways and Misconstrued Meanings. What happens when we set off on a foundation of beliefs and then realize, “Oh, it’s not exactly the way I thought it was”? Or, we make assumptions, read events with those assumptions and then recognize that what could have been treated differently is now attached to a whole new set of – do we say - “challenges”? Well, call it overcoming stumbling blocks or being in the human form, I’m calling it, “Worn out Ways and Misconstrued Meanings.” Join the voices, musings and music by Sarah Karni, Chuck Barry and the Beautiful Losers Society, Joe Hayes and Arjun Makhajani, AKA: Dr. Egghead. Back Roads Radio is hosted/produced by Judy Goldberg and is a production of Viewpoint Productions.

## Saturday, August 20

**6 a.m. New Dimensions.** Magical, Combustible Words, with Phil Cousineau. Do you ever find yourself a little mumblymouthed? Or do you go to the dictionary to look up a word, only to get sidetracked when other, more interesting words catch your eye? If so, you share Phil Cousineau’s dynamic relationship with words. For him they’re playthings, enchantresses, magical sounds that can stir your heart, and mementos that tell fascinating stories about the lives of the ancestors who created them.



**Phil Cousineau**  
Photo Credit: New Dimensions

The way we use them has more power than we may realize. Writer, teacher, editor, scholar, documentary filmmaker, and storyteller Phil Cousineau says, "Words matter. They're combustible. They can convey love. They can convey political struggles. Do we call what's happening in the Middle East, 'building settlements,' or do we say, 'housing construction'? It's combustible, the words that we choose." You'll even find clues to how you can stop procrastinating, and finally finish that novel you've been working on, if only you can find the words. To learn more about the work of Phil Cousineau go to [www.PhilCousineau.net](http://www.PhilCousineau.net). Program #3358.

## Sunday, August 21

**11 a.m. Moth Radio Hour.** Double-amputee Aimee Mullins chronicles her adventures with prosthetic legs as an athlete, actress and artist; the mother of a bullied teen tells the story of his suicide; ex-NYC Mayor Ed Koch stands up to his anti-semitic platoon leader while in training for WWII; and three teenagers from Grace King High School in New Orleans share their stories on the theme, Prejudice and Power. Hosted by Sarah Austin Jenness, Producing Director at The Moth.

**6 p.m. Radio Theater.** Two Works from Hub of the Universe Productions. Our Miss Brooks is from the classic comedy series which originally aired on CBS Radio. In this re-creation of a 1949 Al Lewis episode, Constance Brooks, English teacher at Madison High School, agrees to host her students' Halloween party in order to dunk for apples with Mr. Boynton, the science teacher for whom she holds a candle.

The Stone Ship by Len Peterson is based on William Hope Hodgson's eerie 1914 sea-bound thriller. In 1887, the crew of the merchant windjammer Alfred Jessop, adrift for days and shrouded in an unnatural mist, stumble across the wreck of an impossible ship.

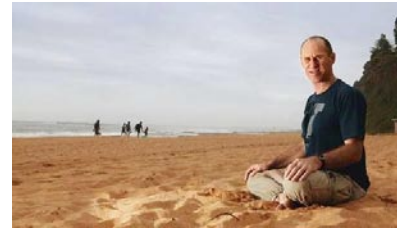
## Wednesday, August 24

**10 p.m. Best of ¡Globalquerque!** Liber Terán and The Flatlanders. See August 3rd listing for more about ¡Globalquerque! 2011. This week's show will feature performances by Liber Terán (Mexico) and The Flatlanders with Tom Russell from ¡Globalquerque! 2010. The show was produced by Southwest Stages in collaboration with KUNM, Native Voice 1 and ¡Globalquerque!

## Friday, August 26

**8:30 a.m. Peace Talks Radio: The Series on Peacemaking and Nonviolent Conflict Resolution.** "Only an alert and knowledgeable citizenry can compel the proper meshing of the huge industrial and military machinery of defense with our peaceful methods and goals, so that security and liberty may prosper together." When President Eisenhower warned of the power of the military industrial complex in January 1961, he probably wouldn't have guessed that the 2012 budget

request for defense-related expenditures would be one trillion dollars. While conventional wisdom asserts that war and military spending are good for the economy, a 2007 report by the Center for Economic and Policy Research showed that military spending diverts resources from productive uses, such as consumption and investment, and ultimately slows economic growth



Steve Killelea  
Photo Credit: Peace Talks Radio

and reduces employment. This time on Peace Talks Radio, we'll explore the relationship between economic development and peace. We'll talk with two representatives from the Institute for Economics and Peace: Steve Killelea and Clyde McConaghy. We'll also talk with Gayle Tzemach Lemmon, the New York Times bestselling author of *The Dressmaker of Khair Khana* - the true story of the "breadwinners in burqas," five Afghani sisters who become successful entrepreneurs during the Taliban years. Suzanne Kryder hosts. Produced by Paul Ingles.

## Saturday, August 27

**6 a.m. New Dimensions.** The Spell of Life, with Michael Meade. What is Fate and how is it tied to our potential destiny? How do we find our own story, which has been seeded in the soul? By mistake or fate, on Michael Meade's thirteenth birthday, his aunt, thinking she was giving him a book on history, gave him a book on mythology. He was living in a broken neighborhood, where people lived in fear. That very night he pored over this book and says, "That night, through myth and that kind of language, I realized that right near the fear is the hidden beauty. And a person has to figure out how to face the fear, in order to find the beauty. For me, myth absolutely did that." Is our life accidental or is it purposeful? If it is purposeful, then there is fate involved. Renowned storyteller Michael Meade says, "But inside fate is the forgotten hidden destiny; that is the natural inheritance of each person born." He gives us hints as to how we may recall our soul's original agreement, and how all learning is actually remembering. Our whole life is trying to remember the agreement that our soul made before we were born. Program #3373.

## Sunday, August 28

**11 a.m. Moth Radio Hour.** The Moth's founder, George Dawes Green, details the fireworks when his mother learns that her family plantation is slated to be turned into a theme park; the genesis story of a true bohemian, including two children, one spectacularly eccentric mother and Savannah, Georgia; and a guard at Sing Sing is intrigued by a prisoner's unusual and mysterious tattoo. Hosted by Catherine Burns, Artistic Director of The Moth.

Continued from page 11

**6 p.m. Radio Theater.** Two works from Final Rune Productions. A Most Dangerous Game by Richard Connell in a new audio adaptation by Fred Greenhalgh: Wealthy big-game hunter Sanger Rainsford falls off his boat in the middle of the Caribbean and finds himself on a curious island. He finds the mansion of General Zaroff, a Cossack who has a taste for the hunt, and will go to any extreme to keep himself entertained.



Tales from Williamsville (adult themes) written by John Coons, Adapted by Frederick Greenhalgh: Welcome to Williamsville, where tradition and routine dictate the ebb and flow of life. Yet, Williamsville is not without its stories... How do a repressed arsonist, a sexually-charged geriatric, a slimy drug dealer and a soccer mom on steroids come together to enact the most exciting thing to happen in Williamsville since 1936?

**Wednesday, August 31**

**10 p.m. Best of ¡Globalquerque!** Kenge Kenge, Emeline Michel, and Melody of China. See August 3rd listing for more about ¡Globalquerque! 2011. This week's show will feature interviews and performances by Kenge Kenge (Kenya), Emeline Michel (Haiti) and Melody of China (China) from ¡Globalquerque! 2010. The show was produced by



**Melody of China**  
Photo Credit: Globalquerque

Southwest Stages in collaboration with KUNM, Native Voice 1 and ¡Globalquerque!



**Emeline Michel**  
Photo Credit: Globalquerque

**ATTENTION, NON-PROFIT ORGANZATIONS!**

**Talk to your organization about putting together a team of phone volunteers to answer phones during KUNM's 45th Anniversary Fund Drive, October 15-21, 2011**

**Call Rob Raucci at (505) 277-4516 or e-mail at [operations@kunm.org](mailto:operations@kunm.org) for more details.**

**P.S. We need phone room captains and parking attendants, too!**

**C'mon and have some fun and do your part to keep KUNM on the air!**

**89.9FM KUNM**

APROPOF WORLDWIDE . ALL THINGS CONSIDERED . ALTER-NATIVE RADIO . CALL-IN SHOW . COFFEE EXPRESS . COUNTERSPIN . CYBERAGE . EARLY GROUND . DEMOCRACY NOW . ESPEJOS DE AZLAN . FOLK ROUTE . FRESH . GLOBAL MUSIC . HOME OF HAPPY FEET . HOUSE OF JAZZ BUILT . IYAH MUSIC . LATINO USA . LIVING ON BARTH . MEXICAN MUSIC TO SOOTHE THE SAVAGE BEAST . NATIVE AMERICAN . NEW DIMENSIONS . OTHER VOICES . OTHER SOUNDS . PERFORMANCE . PERFORMANCE TODAY . PSYCHEDELIC RADIO . RADIO THEATER . RAGES . RADIO THEATER ROUTE . ROSA . SINGING WIRE . SPOKEN WORD . STREET BEAT . THIS AMERICAN LIFE . VOICES FEMINISTAS . WEEKEND EDITION . WOMEN'S RADIO

**ELEKTRIK. ECCENTRIC. ECLECTIC.**

An eclectic mix of informative and entertaining programs await you on KUNM – your passport to the worlds of news, music, community and culture. Publicly supported. Publicly responsive. KUNM is an essential part of New Mexico's day.

**KUNM 89.9FM | STREAMING LIVE 24/7 AT [KUNM.ORG](http://KUNM.ORG)**



Many thanks to the businesses and individuals listed below, who are helping to underwrite the cost of KUNM's programming. Should you have the opportunity, we hope you'll also thank them for supporting public radio! **For information on underwriting opportunities, call (505) 277-3969.**

**1uffakind** PO Box 6164, Albuquerque 87197,  
www.1uffakind.com

**310 Solar, Inc.** 505-822-9200  
**abqARTS**, Albuquerque's monthly magazine of  
the arts. www.abqarts.com

**Aztec Animal Clinic**, AztecAnimalClinic.com

**Betty's Bath & Day Spa** 1835 Candelaria NW,  
Albuquerque, www.bettysbath.com

**Bob Turner's Ford Country**, www.bobturners-  
ford.com

**Business Matrix LLC**  
www.businessmatrixllc.com

**CLEANSWITCH Solar Equipment and Con-  
tracting**, 505-888-8966, www.cleanswitch.com

**CST Technologies, Inc.** 219 Central Ave. NW,  
Albuquerque, 379-4662

**Fred & Sandra Creek**, Realtors, Coldwell  
Banker Legacy, www.ABQHomes.com  
480-3733

**Dan Cron Law Firm, P.C.** 125 Lincoln Ave.,  
Santa Fe, 87504, 505-986-1334

**Deb Hurt, Realtor, Exit Realty of Albuquerque**  
www.affordableabqhomes.com, 321-0562

**Field & Frame** 107 Tulane SE, Albuquerque,  
87106, 255-6099

**Geistlight Photography**, Albuquerque, 87125  
243-2316

**Glass-Rite Replacement Windows**  
800-824-1005 Glass-rite.com

**Greenfire Times**, Newspaper dedicated to a  
diverse and sustainable green economy.  
505-471-5177  
www.greenfiretimes.com

**Guild Cinema** 3405 Central Ave. NE,  
Albuquerque 255-1848, guildcinema.com

**GuitarVista** 3005 Monte Vista NE, Albuquerque,  
(505)268-1133

**High Desert Staffing** 2201 San Pedro NE, Bldg  
4, Ste. 100, Albuquerque, 87110 881-3449

**Hyatt Tamaya** www.tamaya.hyatt.com

**Il Vicino Wood Oven Pizza & Brewery**  
Albuquerque and Santa Fe, www.ilvicino.com

**Independent Volvo** (505) 247-9771  
www.ivs.repair.bz

**Isis Medicine** 401 Botolph, Santa Fe, 87505,  
505-983-8387

**Jiffy Lube** www.jiffylube.com

**Jim's Automotive** 4401 Lead SE, Alberquer-

que, 87108, 256-1531

www.jimsautomotive.com

**Keshi** 227 Don Gaspar, Santa Fe, 87501,  
505-989-8728

**LaMontanita Co-Op** 3500 Central SE, Rio  
Grande NW at Matthew, Albuquerque

**Law Firm of Rothstein, Donatelli, Hughes,  
Dalhstrom, Schoenburg and Bienvenu**  
Santa Fe, Albuquerque, Taos, Phoenix  
505-988-8004

**Lewis and Roca LLP** 201 3rd NW Suite 1950  
Albuquerque, 87102, 764-5400

www.lewisandroca.com

**Leibers Luggage** Menaul at Georgia, ABQ

**Leishman's of Santa Fe** West Cordova Road,  
Santa Fe, www.leishmansofsantafe.com

**Local I.Q.** ABQ local\_iQ.com

**Molina Healthcare**

Medicaid Services 1-800-580-2811

**New Mexico Heart Institute** www.nmhi.com

**Pachamama** 223 Canyon Rd., Santa Fe,  
87501, 505-983-4020

**Plants of the Southwest** 3095 Agua Fria,  
Santa Fe, 505-344-8830

**Primetime Monthly News**  
2403 San Mateo, Suite P-15  
Albuquerque, 87110, 880-0470

**The Retreat** 891-1234, www.retreatnm.com

**Ripe, Inc.** Advertising, 244-0359, www.ripeinc.  
com

**Saggios Restaurant** 107 Cornell Drive, Abu-  
querque, 255-5454

**Sandia Prep** www.sandiaprep.org

**Santa Ana Garden Center** 157 Jemez Dam  
Rd., Bernalillo, NM 867-1322

**Satellite Coffee**

Locations throughout Albuquerque

**Season's Rotisserie Grill** 2031 Mountain  
NW, Albuquerque, 766-5100

**Southwest Women's Health** 883 Lead Ave.  
SE Ste A, Albuquerque, 843-7131

**Sunergy, Inc.** 6211 San Mateo Blvd., NE,  
Albuquerque, 888-8966

**Taos Herb Company**, makers of Yerba Hair  
Care Products, available at Walgreen's and  
other stores. www.taosherb.com

**Ten Thousand Waves**

320 Tesuque Dr., Santa Fe 87505  
tentousandwaves.com

**The Village of Jemez Springs**

www.jemezsprings.org

**Town of Taos**

www.Taossacredplaces.com

**Weekly Alibi** Albuquerque's news and  
entertainment weekly, free every Thursday  
at more than 800 locations; 346-0660; www.  
alibi.com

**Whiting Coffee Company** 3700 Osuna NE,  
Albuquerque, 344-9144

**Women's Specialists of New Mexico** 6320  
Riverside Plaza Ln NW Suite A, Alberquer-  
que, NM, 87120

**Zipt Local Advertising**, 2001 Gold SE, Ste.18  
Albuquerque, 87106, 306-8161

## DID YOU KNOW?

**If it weren't for  
our business  
support, we  
would need  
3 full pledge  
drives per year!**

**So, please take  
the time to  
thank the  
businesses  
that support  
KUNM.**

## Radio Board Meeting

UNM Radio Board Meeting

Tuesday, August 2, 6 pm

Room 101, Scholes Hall, UNM campus

More information at [kunm.org](http://kunm.org)

## General Meeting of the

### KUNM Community:

This meeting is for volunteers, staff, members, listeners and the general public and is on the last Wednesday of every month in the Conference Room on the 3rd floor of Onate Hall on the UNM Campus.

The next general meeting will be held on

Wednesday, August 31, at 6:30 p.m.

Listeners are invited to seek more information at our website:

[kunm.org](http://kunm.org).

# CAN'T SELL?



# DONATE!

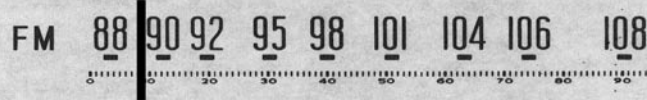
No hassles. We tow it away.

You get a tax deduction &  
a KUNM membership!

# 1-888-KUNM-CAR

FAQs at [www.kunm.org](http://www.kunm.org)

# TALK BACK TO YOUR RADIO



**NPR mailing address:** National Public Radio, 635 Massachusetts Ave.  
NW, Washington D.C. 20001-3753

**NPR Audience Services** 1-205-513-3232

**National Public Radio**, transcripts and tapes: [www.npr.org/transcripts](http://www.npr.org/transcripts)

#### **Programs:**

Morning Edition, All Things Considered,

Weekend Edition, Weekend All Things Considered

Transcripts can also be accessed on the Nexus database.

#### **NPR listener comment lines:**

Morning Edition 202-842-5044

Performance Today 202-842-3522

Weekend Edition Sunday 202-371-1775

**For information on NPR program**, please log onto: [ri.org](http://ri.org)  
[www.npr.org/contact](http://www.npr.org/contact)

**KUNM General Information:** 505/277-4806

#### **KUNM e-mail addresses:**

[KUNM@kunm.org](mailto:KUNM@kunm.org)

Richard S. Towne, General Manager

[richardtownte@kunm.org](mailto:richardtownte@kunm.org)

Tristan Clum, Program Director

[programming@kunm.org](mailto:programming@kunm.org)

Rob Raucci, Operations Manager

[operations@kunm.org](mailto:operations@kunm.org)

Mary Oishi, Development Director

[maryoishi@kunm.org](mailto:maryoishi@kunm.org)

Cris Nichols, Membership Coordinator

[membership@kunm.org](mailto:membership@kunm.org)

Linda Rodeck, Underwriting Specialist

[lindarodeck@kunm.org](mailto:lindarodeck@kunm.org)

KUNM home page: <http://kunm.org>

Ear to the Ground: [kunmear@unm.edu](mailto:kunmear@unm.edu)

Radio Theater: [art@unm.edu](mailto:art@unm.edu)

**KUNM News Department** [news@kunm.org](mailto:news@kunm.org), [kunm.org/news](http://kunm.org/news)

**FAIR** (Fairness and Accuracy in Reporting), produces Counterspin, Tuesdays at 8:30 a.m., 130 W. 25th St., New York, NY 10001. For subscription information on their magazine Extra: 1-800-847-3993

**Living on Earth comment line:** 1-800-218-9988. Mailing address: Living on Earth, PO Box 639, Cambridge, MA 02238.

**Bioneers:** 6 Cerro Circle, Lamy, NM 87540; 1-877-BIONEER, online at [bioneers.org](http://bioneers.org)

**Alternative Radio:** [www.alternativeradio.org](http://www.alternativeradio.org), [info@alternativeradio.org](mailto:info@alternativeradio.org)  
1-800-444-1977; PO Box 551, Boulder, CO 80306

**CCNS Weekly News Update:** [www.nuclearactive.org](http://www.nuclearactive.org)  
Hotline: (505) 982-5611; 800-456-8863

**StarDate:** 1-800-STARDATE; 2609 University Ave. #3.118, Austin, TX 78712.

**This Way Out,** PO Box 38327, Los Angeles, CA 90038;  
phone 818-986-4106.

**Native America Calling:** Produced by Koahnic Broadcast Corp. Call-in number: 1-800-99-NATIV. For comments or program copies e-mail: [comments@nativeamericacalling.com](mailto:comments@nativeamericacalling.com) or fax request to 505-999-2401.